

Alma Square, NW8

£669 Per week

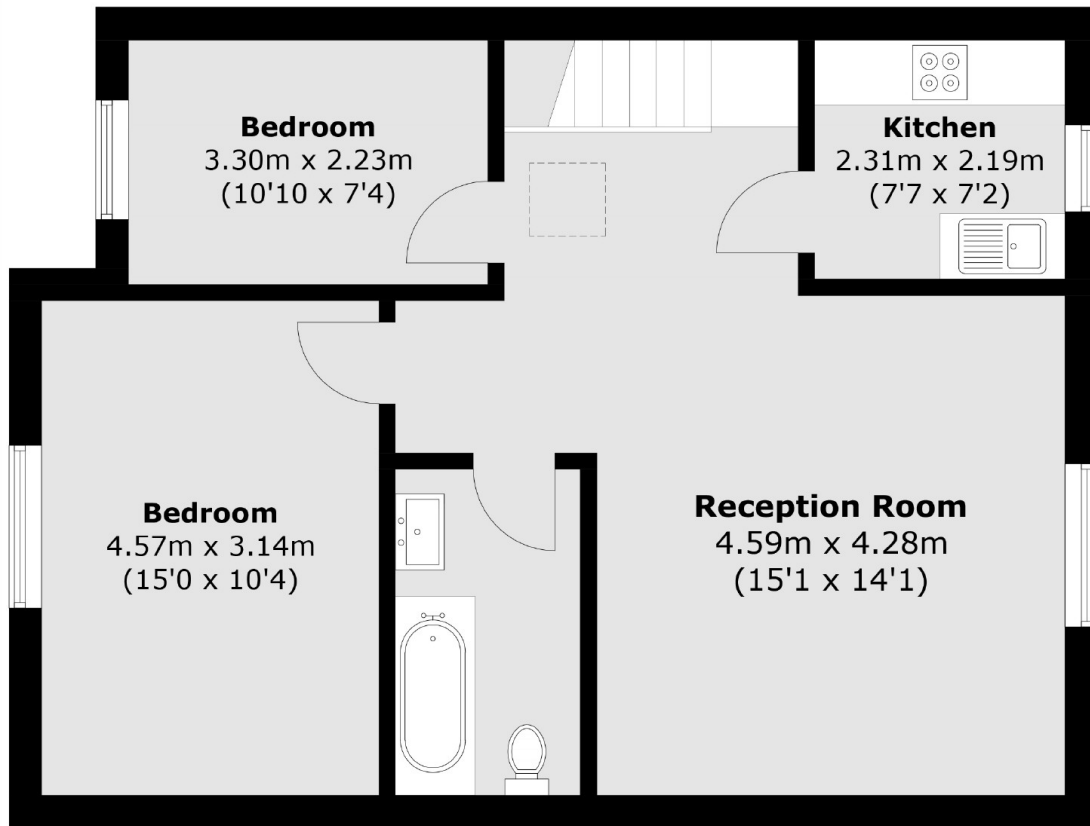
A refurbished two double bedroom apartment on the top floor of a period conversion in Alma Square. Spacious reception room, refurbished separate kitchen and two good size double bedrooms. Residents have access to a well maintained communal garden.

Alma Square is located off of Abbey Road and short distance to both St Johns Wood and Maida Vale underground stations giving residents good transport links into the city.

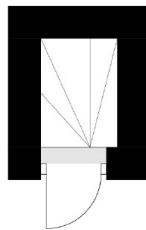
Features

- Two Double Bedrooms
- Brand New Kitchen & Bathroom
- Wood Floors Throughout
- Top Floor Apartment
- Communal Garden
- Great Location

Alma Square, London, NW8



Second Floor



First Floor

Total area (approx.): 64.2 sq. m (691.0 sq. ft)