

Ryders Terrace, NW8

£675 Per week

A bright two double bedroom mews house in St Johns Wood. Spacious reception room with wood floors, open plan kitchen, two double bedrooms, family bathroom and WC. Ideal home for two professional sharers or a couple.

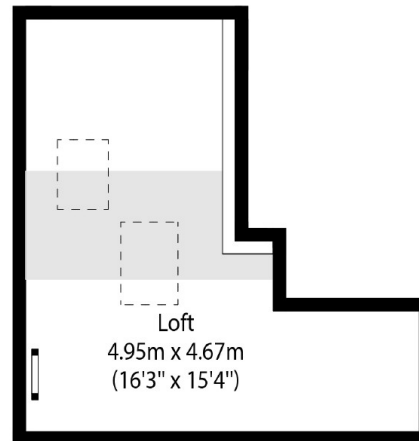
Ryders Terrace is located behind Blenheim Terrace and a short distance to local shops, restaurants and cafés on Abbey Road.

Features

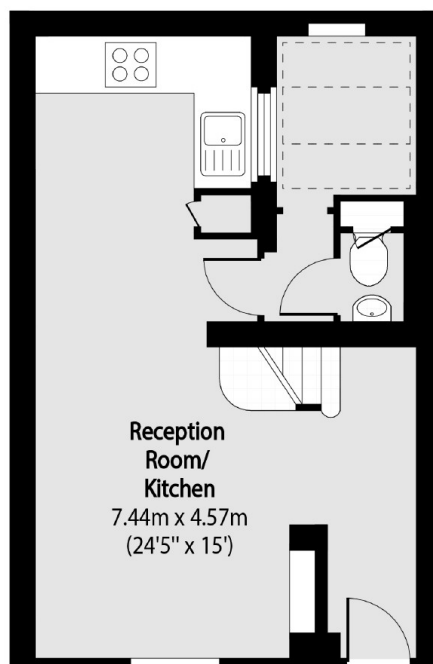
- Two Bedroom Mews House
- Arranged Over Two Floors
- Open Plan Kitchen
- Good Storage
- Wood Floors In Reception
- Great Location

Ryders Terrace, London, NW8

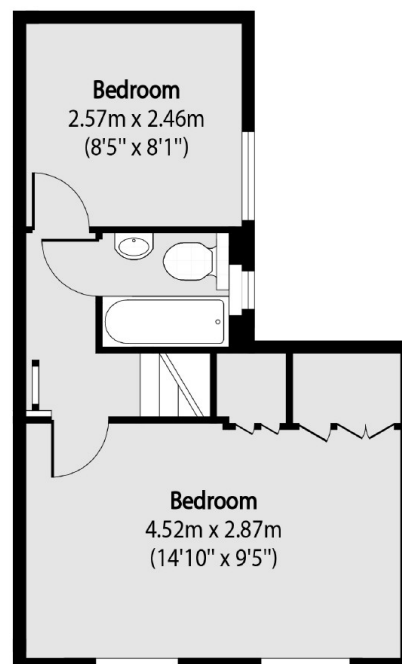
Second Floor



Ground Floor



First Floor



Total area (approx): 60.57 sq m (652 sq. ft)

Total Area of the Loft Including Restricted Heights: 16.07 sq m (173 sq. ft)

Dexters

St. John's Wood
4-6 St Ann's Terrace
London
NW8 6PJ
Lettings
020 7483 6330

Energy Rating: D. We aim to make our particulars both accurate and reliable. However they are not guaranteed; nor do they form part of an offer or contract. If you require clarification on any points then please contact us, especially if you're traveling some distance to view. Please note that appliances and heating systems have not been tested and therefore no warranties can be given as to their good working order.

 **RICS** | Regulated
Estate Agent
and Letting Agent

[dexters.co.uk](https://www.dexters.co.uk)