



Wells Rise, NW8

£3,750,000

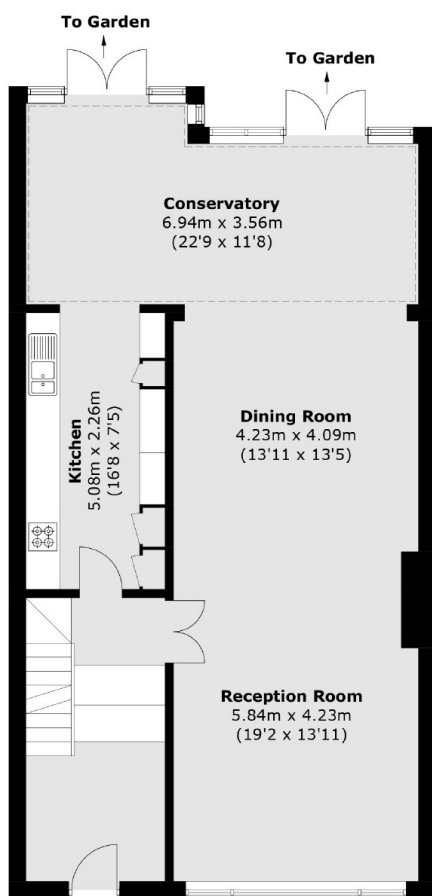
A beautifully presented freehold home offering 2,720 sq ft of well-balanced living space, including four bedrooms and three bathrooms.

Wells Rise, tucked quietly off Prince Albert Road in St John's Wood, sits just 200m from both Regent's Park and Primrose Hill. Excellent transport links include St John's Wood Tube (Jubilee line) and numerous buses, while St John's Wood High Street, Marylebone, cafés, restaurants and shops are all within easy walking distance.

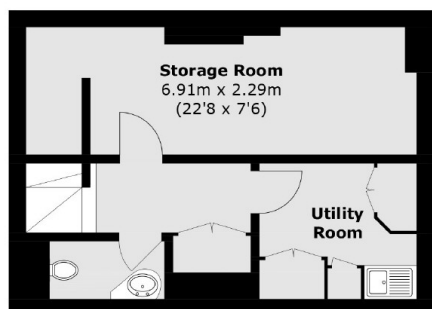
Features

- Four Bedrooms
- Three Bathrooms
- On Regents Park
- Private Garden
- Off-Street Parking
- Conservatory Extension

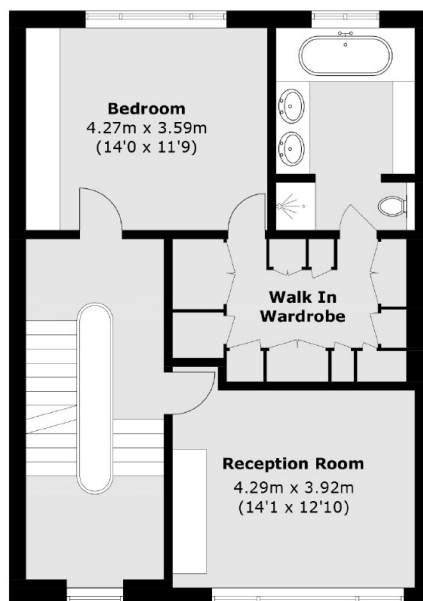
Wells Rise, London, NW8



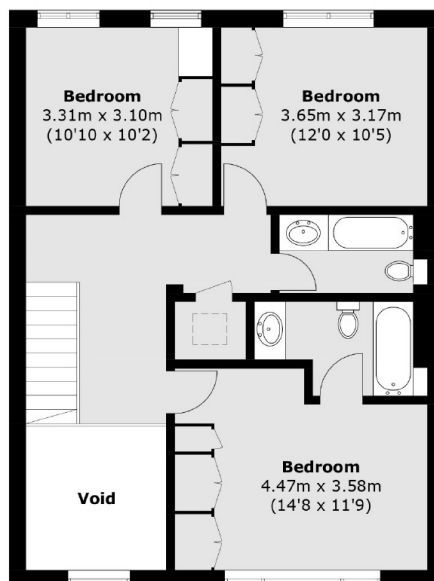
Ground Floor



Lower Ground Floor



First Floor



Second Floor

Total area (approx.): 255.0 sq. m (2,744.8 sq. ft)
(Excluding Void)

Dexters

St. John's Wood
4-6 St Ann's Terrace
London
NW8 6PJ
Sales
020 7483 6300

Energy Rating: D. We aim to make our particulars both accurate and reliable. However they are not guaranteed; nor do they form part of an offer or contract. If you require clarification on any points then please contact us, especially if you're traveling some distance to view. Please note that appliances and heating systems have not been tested and therefore no warranties can be given as to their good working order.

RICS Regulated
Estate Agent
and Letting Agent

dexters.co.uk