



## St. Johns Wood High Street, NW8

**£646** Per week

A two double bedroom second floor apartment on St John's Wood High Street. Bright reception room, separate kitchen, two equal size bedrooms and bathroom. Ideal for two professional sharers, a couple or small family.

The property is location on St John's Wood High Street which offers a range of local shops, restaurants and cafés. The open green spaces of Primrose Hill and Regents Park are both a short walk away.

### Features

- Two Double Bedrooms
- Separate Kitchen
- Second Floor Apartment
- Great Location
- Furnished
- St Johns Wood Tube

# St. Johns Wood High Street, London, NW8

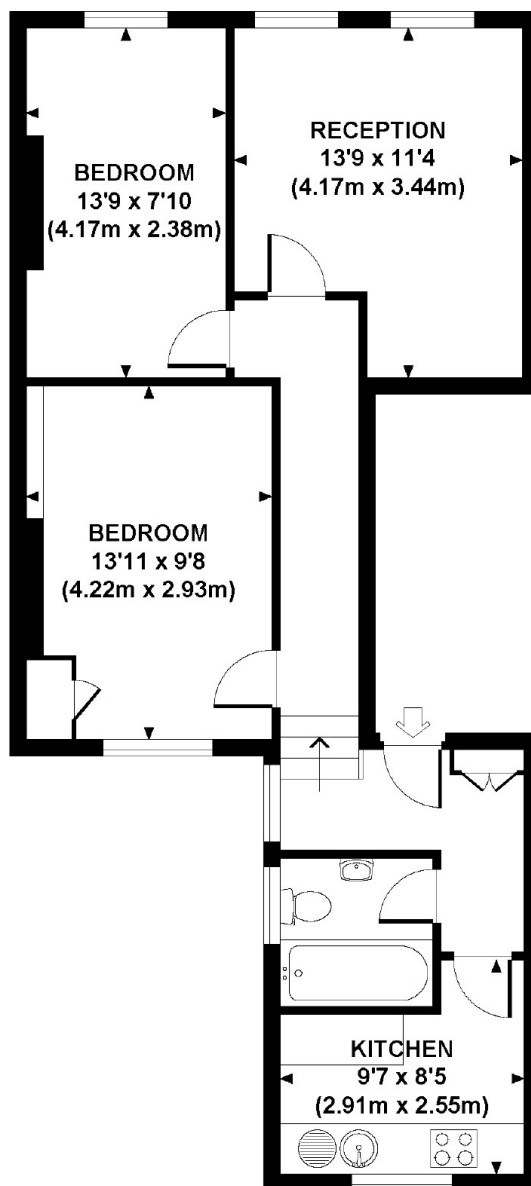
## ST. JOHN'S WOOD HIGH STREET, NW8

Approx. gross internal area

610 Sq Ft. / 56.7 Sq M.

Representation of current layout.

Not to scale.



FIRST FLOOR