



## Park Village West, NW1

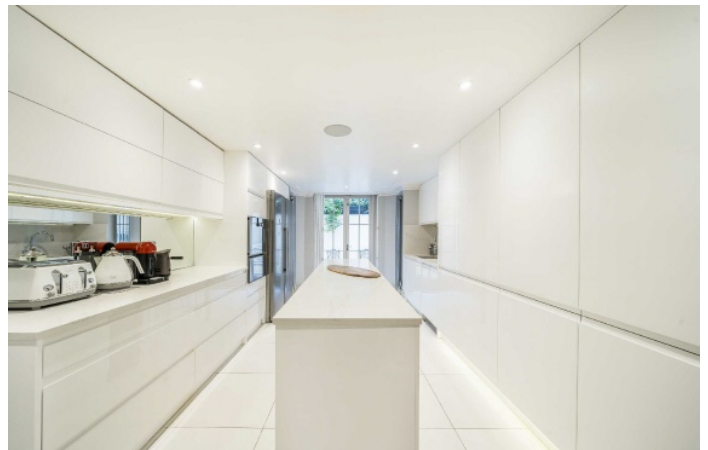
£3,692 Per week

A delightful Grade II listed Nash villa, ideally situated just steps away from the expansive greenery of Regent's Park. This property features a beautiful, mature garden that surrounds three sides of the house.

Park Village West is ideally situated moments from Regents Park, close to local amenities and excellent transport links.

### Features

Secure Gated Five Bedroom  
Nash Villa  
Large Garden  
Air Conditioning  
Study, Steam Room and Utility  
Room  
Excellent Location

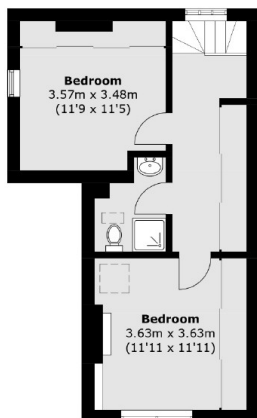


## Park Village West, NW1

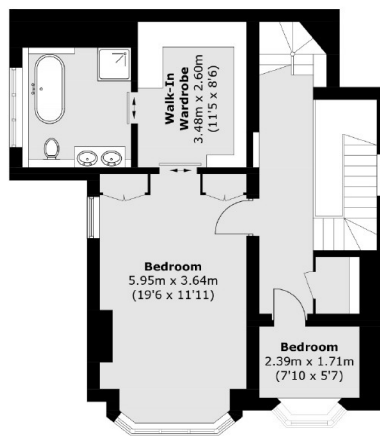
The accommodation includes a master bedroom with a dressing room and ensuite bathroom, two or three additional bedrooms, a study, bathroom, fully equipped kitchen with modern appliances, dining room with a dumbwaiter service lift, reception room, wet room, steam room, and a garden.



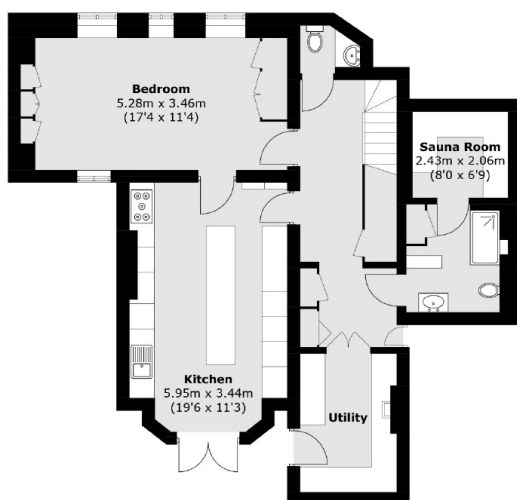
# Park Village West, London, NW1



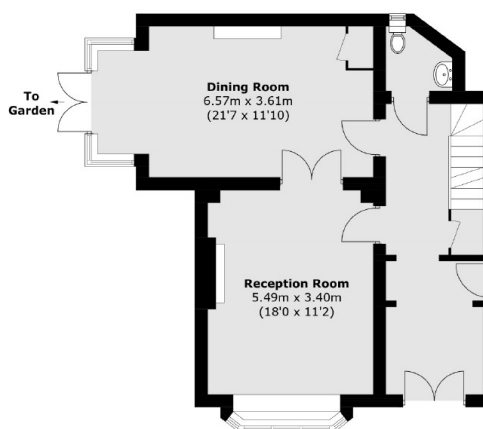
**Second Floor**



**First Floor**



**Lower Ground Floor**



**Ground Floor**

Total area (approx.): 255.4 sq. m (2,749.1 sq. ft)