



Eaton Square, SW1W

£5,995,000

Dexters



Eaton Square, London, SW1W

A three bedroom apartment overlooking the world famous Eaton Square. The property has high ceilings throughout and has been refurbished to an incredibly high standard.

The flat has superb living space including two large reception rooms accessed via archways either side of the welcoming hallway. All bedrooms have storage, polished parquet flooring and large sash windows.

The sitting room has delightful views over the gardens to the front and across the hallway, the dining room has floor to ceiling built in dressers and is a perfect space for entertaining friends and family.

The master bedroom has views over the square and the two double bedrooms have marble ensuite bathrooms, one with a double width shower room and the other with a bathroom.

Located on the west side of Eaton Square, this property is under a quarter of a mile from Sloane Square tube station and under a mile from Mayfair and Harrods.

Features

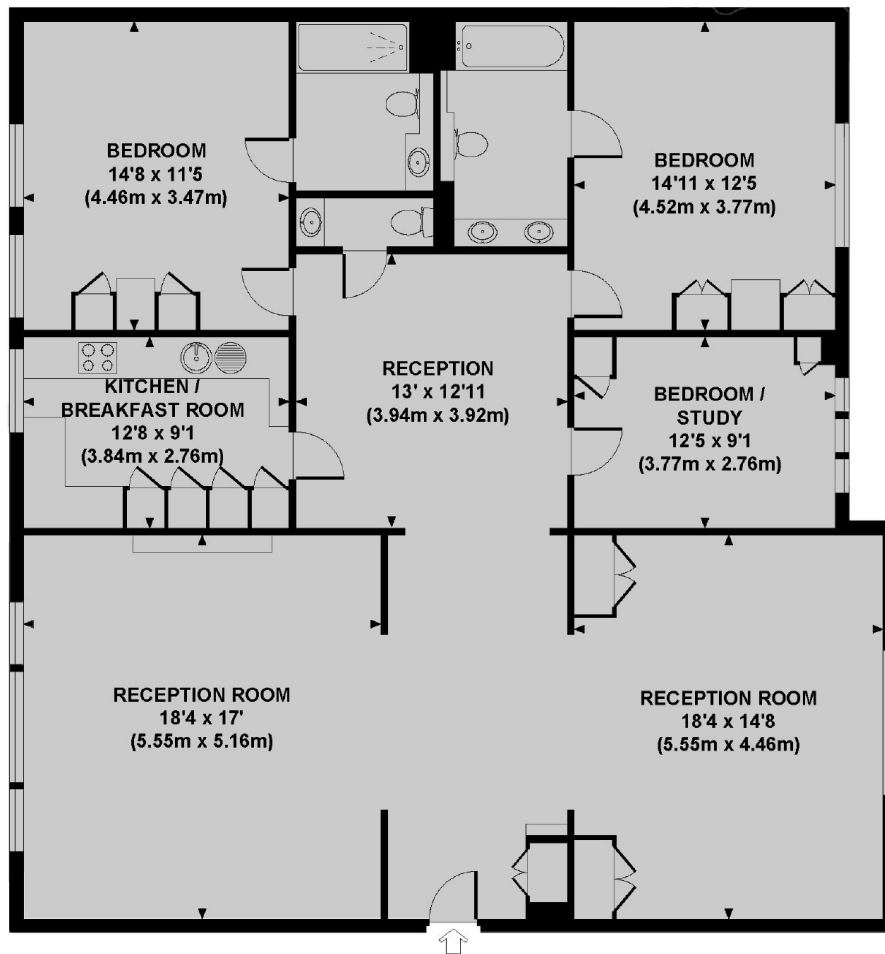
- Two/Three Bedrooms
- Two Reception Rooms
- High Ceilings
- Long Lease
- Porter
- Recently Refurbished







Eaton Square, London, SW1W



GROUND FLOOR

EATON SQUARE, SW1W

Approx gross internal area
1679 Sq Ft / 156.0 Sq M.

Dexters

Chelsea
14 Culford Gardens, Chelsea,
London, SW3 2ST

Sales
020 7590 9510

Energy Rating: C. We aim to make our particulars both accurate and reliable. However they are not guaranteed; nor do they form part of an offer or contract. If you require clarification on any points then please contact us, especially if you're traveling some distance to view. Please note that appliances and heating systems have not been tested and therefore no warranties can be given as to their good working order.

RICS | Regulated
Estate Agent
and Letting Agent

dexters.co.uk