



Draycott Place, SW3

£3,299,999

Dexters



Draycott Place, London, SW3

A large period conversion apartment tucked away behind the Kings Road. The property has three double bedrooms, a 21' reception room, kitchen/breakfast room and private terrace.

The flat has lots of space as it is arranged over two floors with direct lift access into a bright hallway. The living space is ideal for entertaining with a large reception room and attractive bay window allowing in plenty of natural light.

On the top floor there is a master bedroom with fitted wardrobes and windows over looking the terrace. The apartment also has two further double bedrooms and two bathrooms.

A real feature of the property is the delightful south facing terrace with rooftop views.

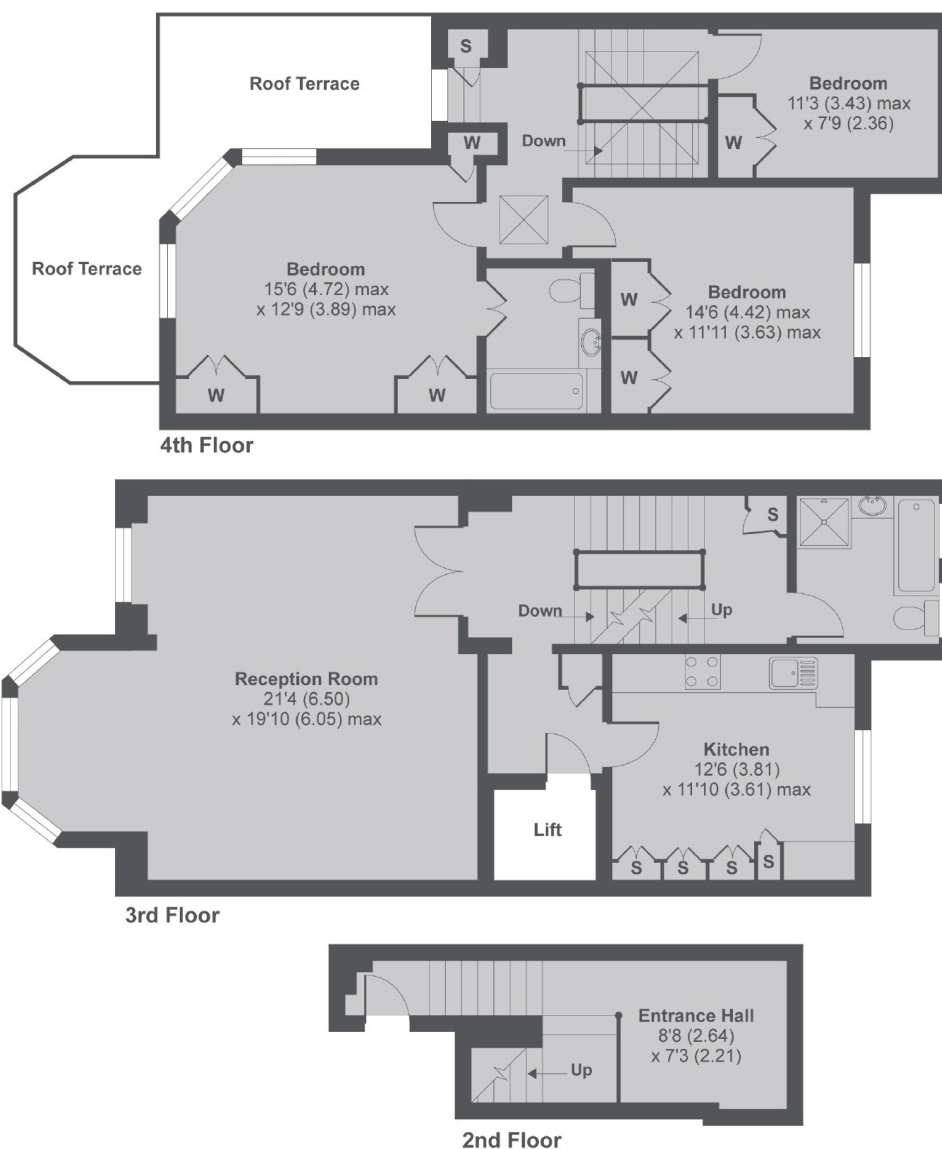
This property is moments from the shops and restaurants of the Kings Road as well as being a quarter of a mile from Sloane Square tube station.

Features

- Period Building
- Share of Freehold
- South Facing Terrace
- Direct Lift Access
- Three Bedrooms
- Two Bathrooms



Draycott Place, London, SW3



Draycott Place, London, SW3

MAIN HOUSE APPROX FLOOR AREA 1543 SQ.FT 143.3 SQ.M (EXCLUDES LIFT)

Copyright nichecom.co.uk 2016 Produced for Dexters REF : 128958

Dexters

Chelsea
14 Culford Gardens, Chelsea,
London, SW3 2ST

Sales
020 7590 9510

Energy Rating: D. We aim to make our particulars both accurate and reliable. However they are not guaranteed; nor do they form part of an offer or contract. If you require clarification on any points then please contact us, especially if you're traveling some distance to view. Please note that appliances and heating systems have not been tested and therefore no warranties can be given as to their good working order.



Regulated
Estate Agent
and Letting Agent

dexters.co.uk