



Holbein Mews, SW1W

£3,500,000

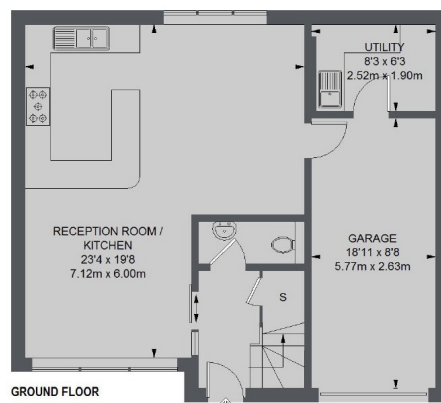
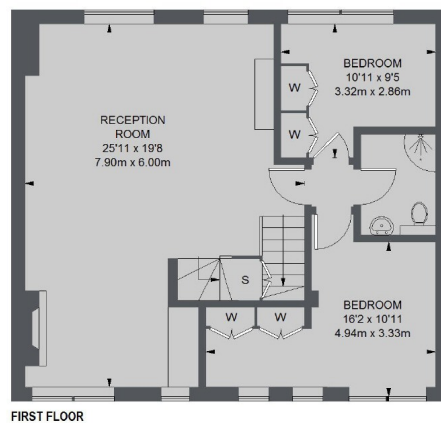
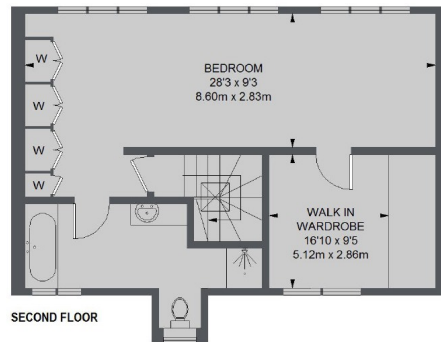
A wide three bedroom Mews house south of Sloane Square. This property is in excellent condition throughout and has been granted planning permission to build a lower ground floor. Freehold.

Holbein Mews is conveniently located moments from Sloane Square. The famous restaurants and shops located on the Kings Road are also within walking distance.

Features

- Three Bedrooms
- Garage
- Air Conditioning
- First Floor Reception Room
- Excellent Transport Links
- Potential For Basement

Holbein Mews, London, SW1W



TOTAL APPROX. FLOOR AREA (INCLUDING GARAGE)
2001 SQ. FT. (185.9 SQ. M.)

Contact

To arrange a viewing call our office on the number below or visit our website.



Energy Rating: D. We aim to make our particulars both accurate and reliable. However they are not guaranteed; nor do they form part of an offer or contract. If you require clarification on any points then please contact us, especially if you're traveling some distance to view. Please note that appliances and heating systems have not been tested and therefore no warranties can be given as to their good working order.