



## Royal Avenue, SW3

£6,250,000

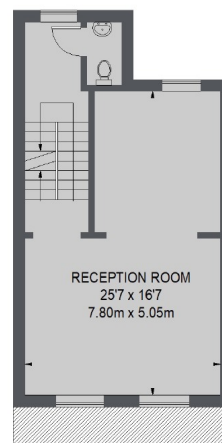
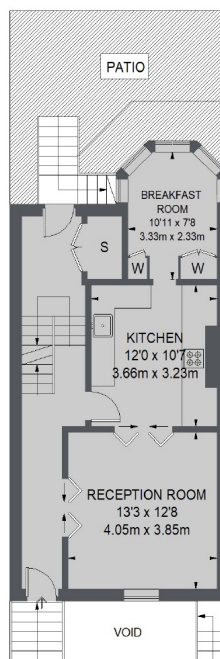
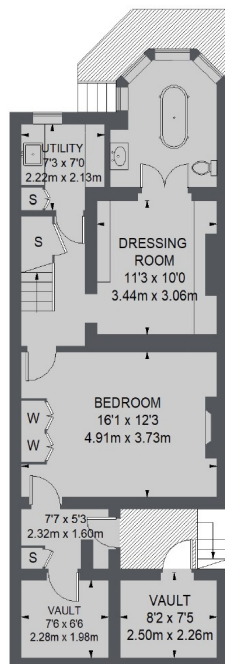
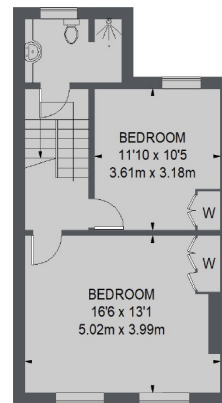
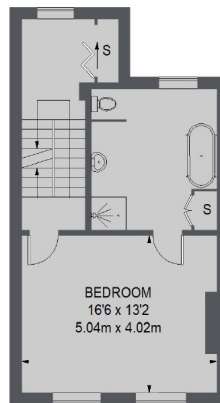
This five storey stucco fronted house on the east side of the the square is offered in excellent decorative order throughout with a private walled patio garden to the rear.

Royal Avenue is located between the Kings road and the Royal Hospital grounds. Sloane Square underground is the closest tube station with many bus routes along the Kings road.

### Features

Freehold  
Four Bedrooms  
Three Bathrooms  
Walled Patio Garden  
Three Reception Rooms  
Kitchen/Breakfast Room

## Royal Avenue, London, SW3



TOTAL APPROX. FLOOR AREA  
(EXCLUDING VAULT)  
2597 SQ. FT. (241.31 SQ. M.)  
VAULT = 112 SQ. FT. (10.44 SQ. M.)  
(INCLUDING VAULT)  
2710 SQ. FT. (251.75 SQ. M.)

### Contact

To arrange a viewing call our office on the number below or visit our website.



Energy Rating: D. We aim to make our particulars both accurate and reliable. However they are not guaranteed; nor do they form part of an offer or contract. If you require clarification on any points then please contact us, especially if you're traveling some distance to view. Please note that appliances and heating systems have not been tested and therefore no warranties can be given as to their good working order.