



Thames Quay, SW10

£799,950

A fully modernised one bedroom apartment with direct river views, a private terrace and secure parking. The property is accessed through smart communal areas and also benefits from portage.

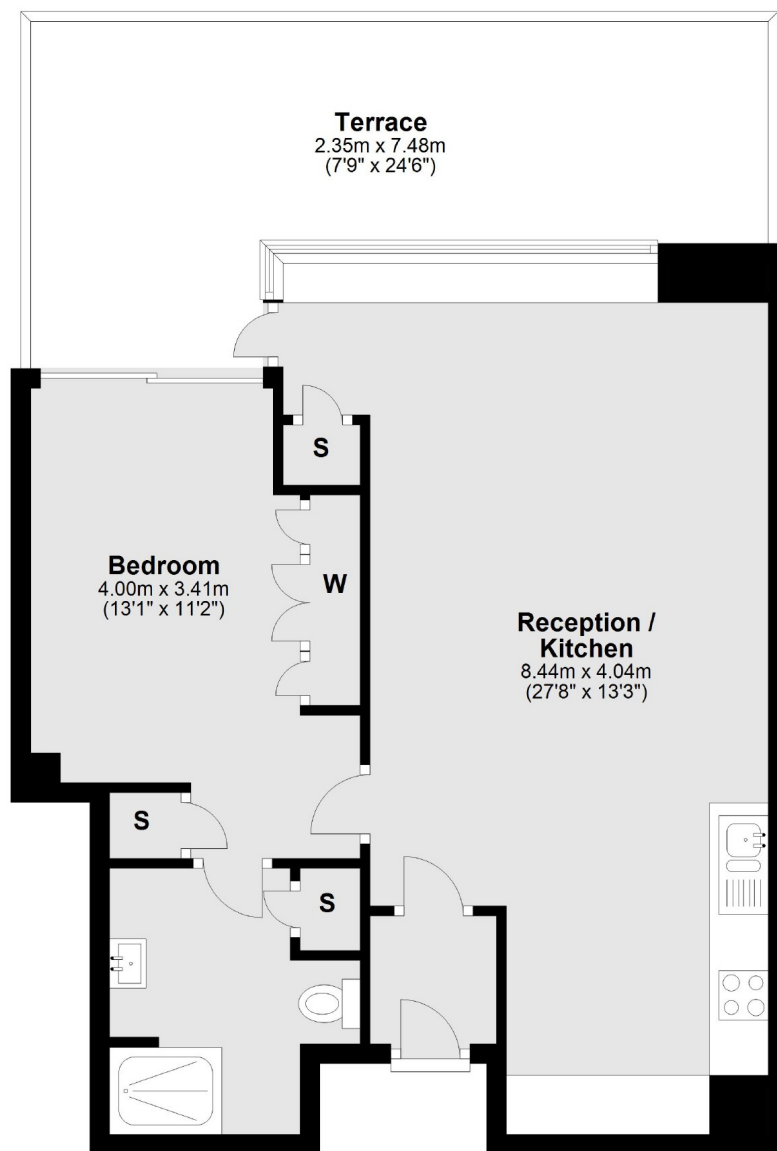
Thames Quay is an exclusive development located next to the River Thames within Chelsea Harbour. Imperial Wharf railway station and river boats to the city are moments away.

Features

- Direct River Views
- Terrace
- Secure Parking
- One Bedroom
- Excellent Condition
- Leasehold (Approximately 92 years remaining)

Thames Quay, London, SW10

Raised Ground Floor



Main area: Approx. 58.0 sq. metres (624.8 sq. feet)
Plus roof terrace, approx. 20.7 sq. metres (222.9 sq. feet)

Contact

To arrange a viewing call our office on the number below or visit our website.



Energy Rating: C. We aim to make our particulars both accurate and reliable. However they are not guaranteed; nor do they form part of an offer or contract. If you require clarification on any points then please contact us, especially if you're traveling some distance to view. Please note that appliances and heating systems have not been tested and therefore no warranties can be given as to their good working order.