



Chester Row, SW1W

£3,600 Per week

Dexters



Chester Row, London, SW1W

A beautiful four bedroom house situated in a row of white stucco fronted terrace houses and located in the heart of Belgravia, close to Elizabeth Street shops & bars.

This beautiful home has been refurbished throughout to a very high standard and benefits from an abundance of reception space, four bathrooms and also enjoys a gym and an attractive patio garden.

The property has great transport links with Sloane Square Tube station for the District and Circle lines a short walk away and is in an excellent location close to the amenities, exclusive shops, cafés and restaurants in Belgravia, Knightsbridge and the Kings Road.

Features

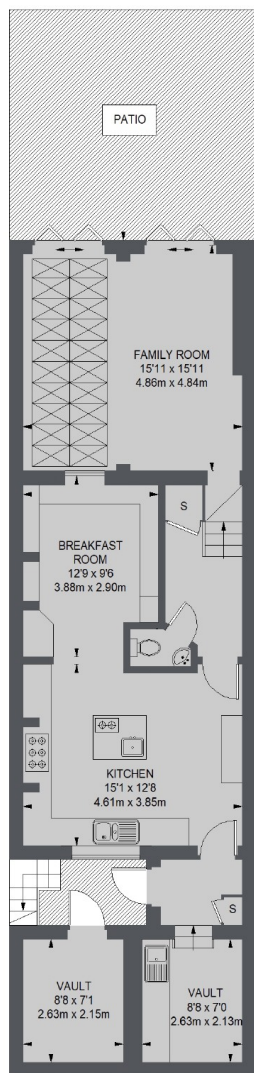
- Four Bedrooms
- Four Bathrooms
- Three Receptions
- Patio Garden
- Kitchen & Breakfast Room
- Permit Parking





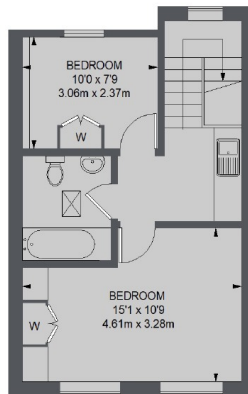


Chester Row, London, SW1W

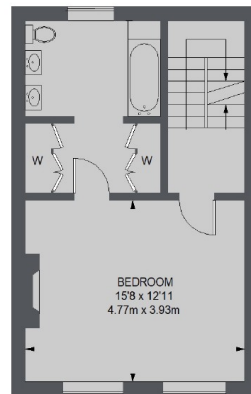


LOWER
GROUND FLOOR

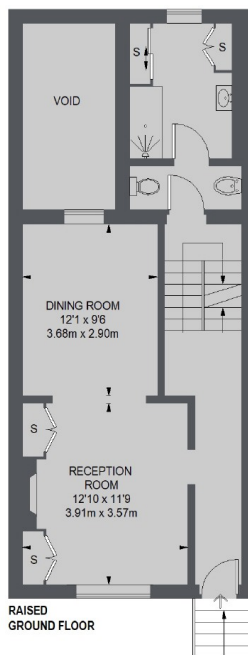
VAULTS



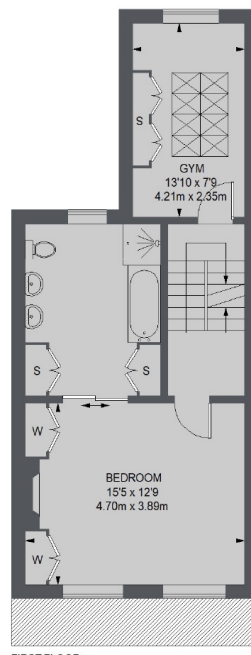
THIRD FLOOR



SECOND FLOOR



RAISED
GROUND FLOOR



FIRST FLOOR

TOTAL APPROX. FLOOR AREA (EXCLUDING VOID)
2464 SQ. FT. 228.92 SQ. M.
VAULTS = 136 SQ. FT. 12.62 SQ. M.

Dexters

Chelsea and Belgravia
45 Sloane Avenue, Chelsea,
London, SW3 3DH

Lettings
020 7590 9500

Energy Rating: C. We aim to make our particulars both accurate and reliable. However they are not guaranteed; nor do they form part of an offer or contract. If you require clarification on any points then please contact us, especially if you're traveling some distance to view. Please note that appliances and heating systems have not been tested and therefore no warranties can be given as to their good working order.

RICS Regulated
Estate Agent
and Letting Agent

dexters.co.uk