



Gatliff Road, SW1W

£650,000

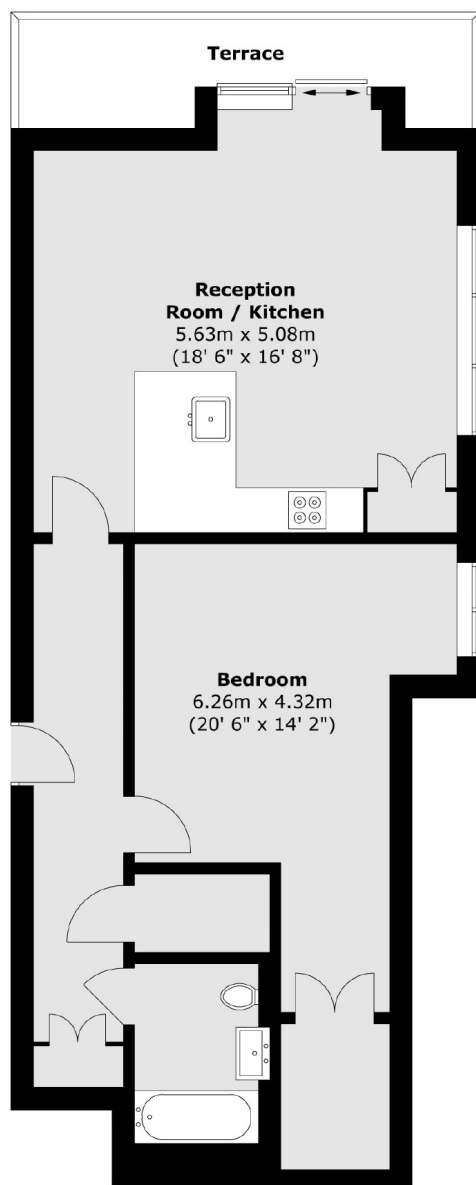
A large one bedroom apartment in excellent condition with plenty of natural light. This property has outstanding views from the fifth floor, plenty of storage and would be an ideal London base or long term investment.

Grosvenor Waterside is a secure development that offers a gym, spa and treatment room. Sloane Square, Chelsea Barracks and Pavilion Road are all moments away.

Features

- Balcony
- Secure Parking
- Lift
- Porter
- One Bedroom
- Gym & Spa

Gatliff Road, London, SW1W



Total area (approx.) : 71 sq. m (764 sq. ft)
Total terrace area (approx.) : 6.6 sq. m (71 sq. ft)

Dexters

Chelsea and Belgravia
45 Sloane Avenue
London
SW3 3DH
Sales
020 7590 9510

Energy Rating: B. We aim to make our particulars both accurate and reliable. However they are not guaranteed; nor do they form part of an offer or contract. If you require clarification on any points then please contact us, especially if you're traveling some distance to view. Please note that appliances and heating systems have not been tested and therefore no warranties can be given as to their good working order.

 **RICS** | Regulated
Estate Agent
and Letting Agent

[dexters.co.uk](https://www.dexters.co.uk)