



Semley Place, SW1W

£500,000

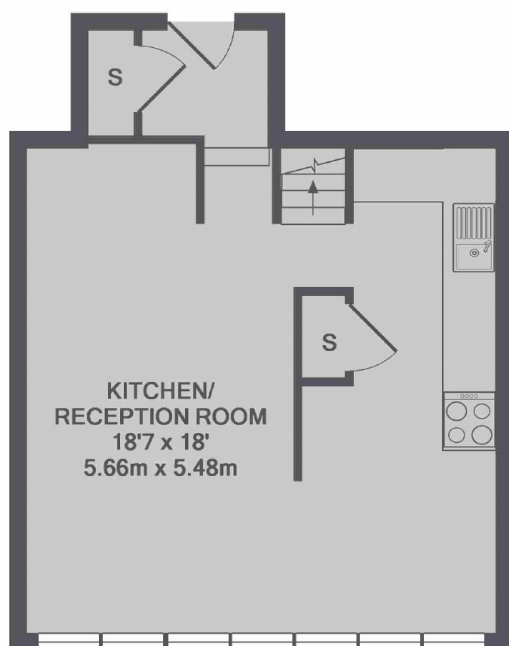
A two bedroom apartment measuring close to 750sqft. This property has a long lease, lift access and would work excellently as a long term investment or London base.

Semley Place is ideally located in the heart of Belgravia moments from the shops and restaurants on Elizabeth Street and is within walking distance to Sloane Square tube station.

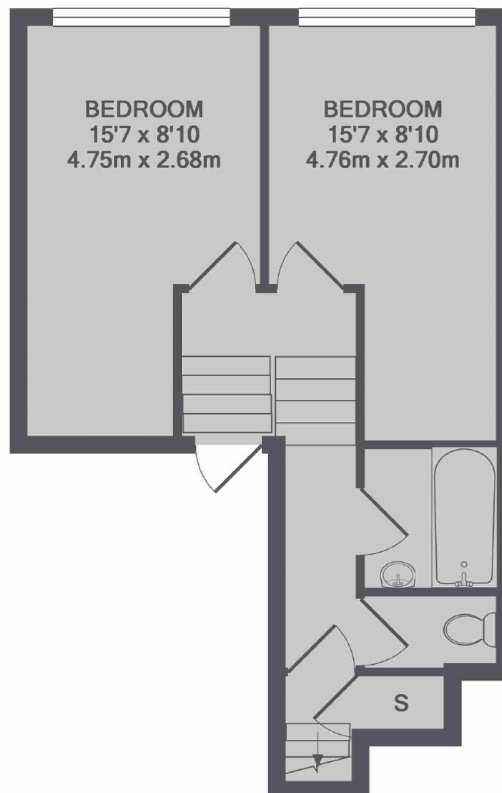
Features

- Two Bedrooms
- Lift
- Long Leasehold
- Excellent Investment
- Popular Location
- Split Level Apartment

Semley Place, London, SW1W



7TH FLOOR



8TH FLOOR

TOTAL APPROX. FLOOR AREA 743 SQ.FT. (69.0 SQ.M.)

Dexters

Chelsea and Belgravia
45 Sloane Avenue
London
SW3 3DH
Sales
020 7590 9510

Energy Rating: . We aim to make our particulars both accurate and reliable. However they are not guaranteed; nor do they form part of an offer or contract. If you require clarification on any points then please contact us, especially if you're traveling some distance to view. Please note that appliances and heating systems have not been tested and therefore no warranties can be given as to their good working order.

 **RICS** | Regulated
Estate Agent
and Letting Agent

[dexters.co.uk](https://www.dexters.co.uk)