



Gatliff Road, SW1W

£925,000

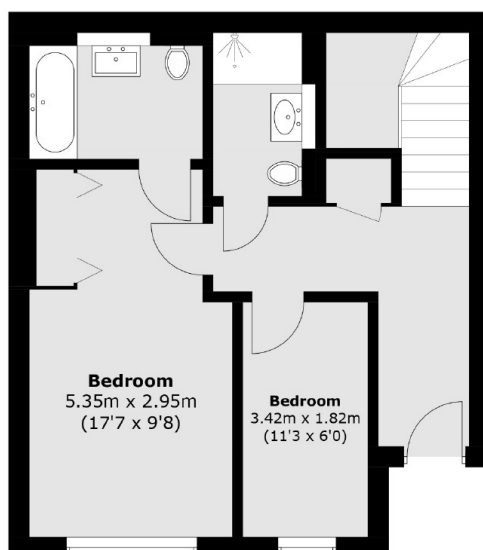
A modern three bedroom apartment situated on the ground and lower ground floor of this popular development, benefitting from 24 hour concierge and security, lift, gym and spa.

Grosvenor Waterside is a secure development that offers a gym, spa and treatment room. Sloane Square, Chelsea Barracks and Pavilion Road are all moments away.

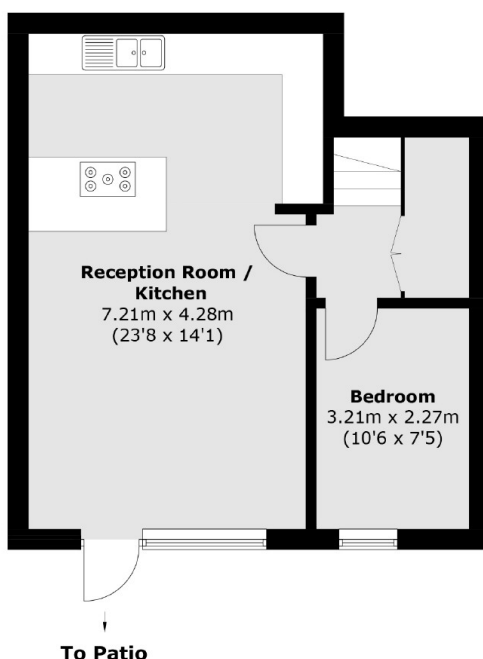
Features

Secure Parking
Three Bedrooms
Porter
Two Bathrooms
Long Leasehold
Great Condition

Gatliff Road, London, SW1W



Ground Floor



Lower Ground Floor

Total area (approx.): 88.2 sq. m (949.3 sq. ft)