



## Chelsea Park Gardens, SW3

£12,500,000

An exceptional property that has been remodelled and redesigned to create a magnificent family home. This house has direct access to beautifully kept communal gardens, six bedrooms and boasts stunning living spaces.

Chelsea Park Gardens is located north of the King's Road and south of the Fulham Road, in a popular area of Chelsea which is conveniently located close to a number of famous restaurants, cafés and boutique shops.

### Features

- Communal Gardens
- Six Bedrooms
- Freehold
- Quiet Location
- Beautifully Designed Terrace



## Chelsea Park Gardens, SW3

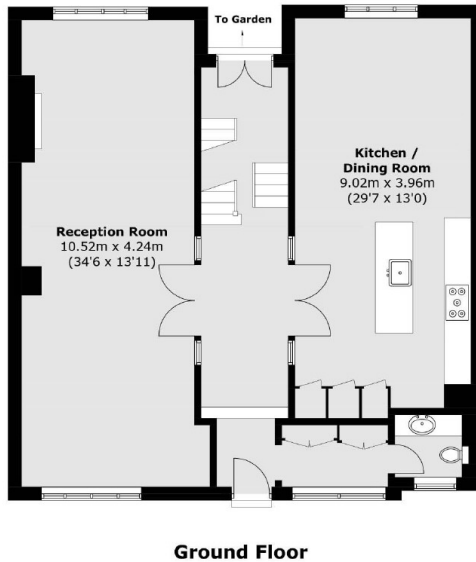
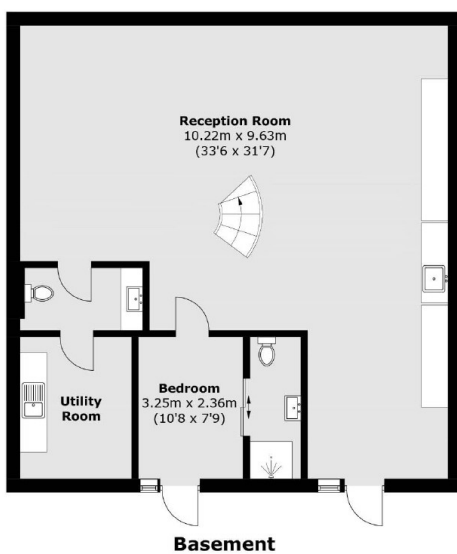
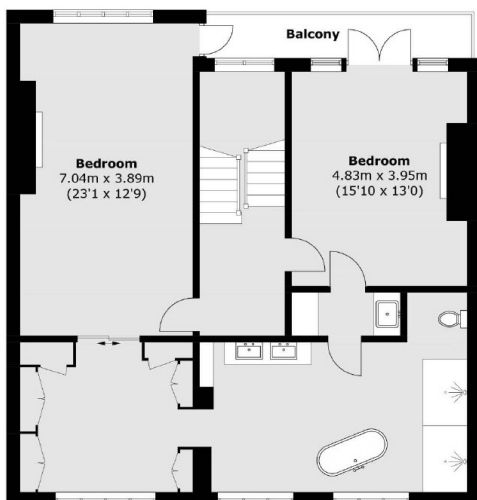
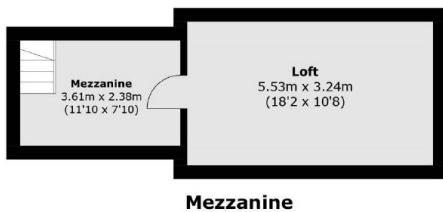
As you enter you are welcomed by a generous reception room with a formal dining area and an eat-in kitchen which has been fully fitted with top of the range appliances. The lower ground floor has exceptionally high ceilings and boasts a stunning, handcrafted staircase that leads to another large reception room, accompanied by a bedroom and a utility room.

Positioned on the first floor is a magnificent principal suite with access to a terrace overlooking the communal gardens and a walk-in wardrobe. There is also another bedroom, currently being used as a family room that also leads directly onto the south-facing terrace and at the top of the house, there are a further four bedrooms, with plenty of wardrobe space and two bathrooms.





# Chelsea Park Gardens, London, SW3



Total area (approx.): 418.7 sq. m (4,506.3 sq. ft)  
(Including Mezzanine)

## Dexters

Chelsea and Belgravia  
45 Sloane Avenue  
London  
SW3 3DH  
Sales  
020 7590 9510

Energy Rating: . We aim to make our particulars both accurate and reliable. However they are not guaranteed; nor do they form part of an offer or contract. If you require clarification on any points then please contact us, especially if you're traveling some distance to view. Please note that appliances and heating systems have not been tested and therefore no warranties can be given as to their good working order.

**RICS** Regulated  
Estate Agent  
and Letting Agent

dexters.co.uk