

Chelsea Park Gardens
Chelsea, SW3

Dexters



Chelsea Park Gardens
Chelsea



About the property

An exceptional six bedroom property that has been remodelled and redesigned to create a magnificent family home, with access to beautifully kept communal gardens.

As you enter, you are welcomed by a generous reception room with a formal dining area and an eat-in kitchen which has been fully fitted with top of the range appliances. The lower ground floor has high ceilings, a handcrafted staircase that leads to another reception room, accompanied by a bedroom and a utility room.

The primary suite, with a walk-in wardrobe, is positioned on the first floor and has access to a terrace overlooking the communal gardens. Additionally, there are four further bedrooms, two bathrooms and another bedroom which is currently being used as a family room.

Chelsea Park Gardens is located north of the King's Road and south of the Fulham Road, in a popular area of Chelsea which is conveniently located close to a number of famous restaurants, cafés and boutique shops.

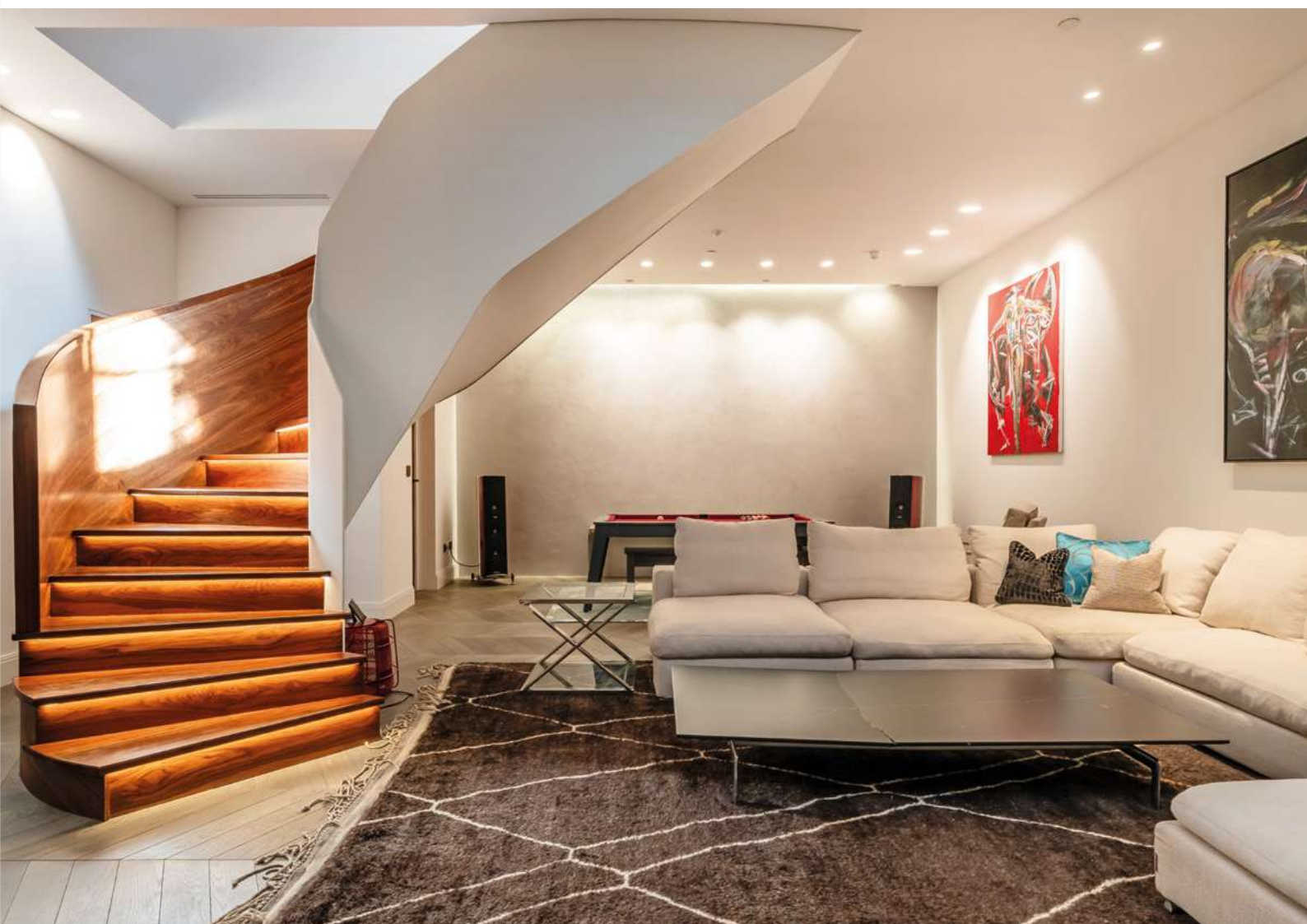


Key features

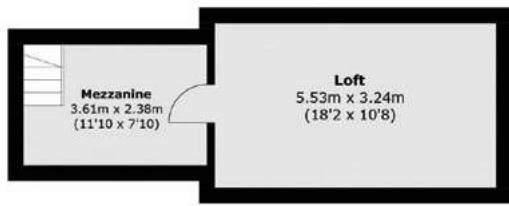
Terraced House
Six Bedrooms
Four Bathrooms
Communal Gardens
Quiet Location
Beautifully Designed



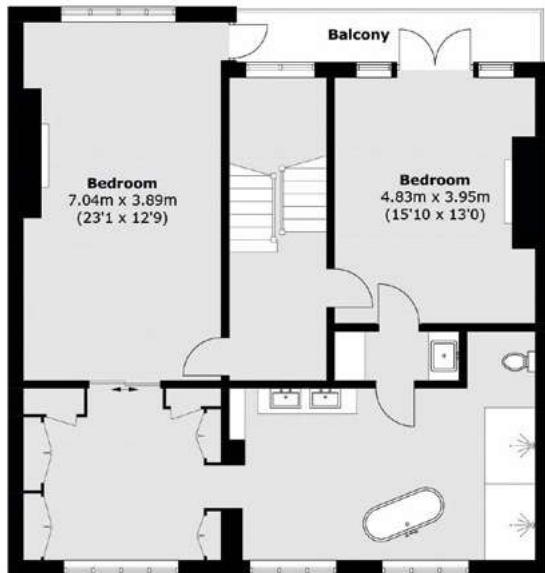




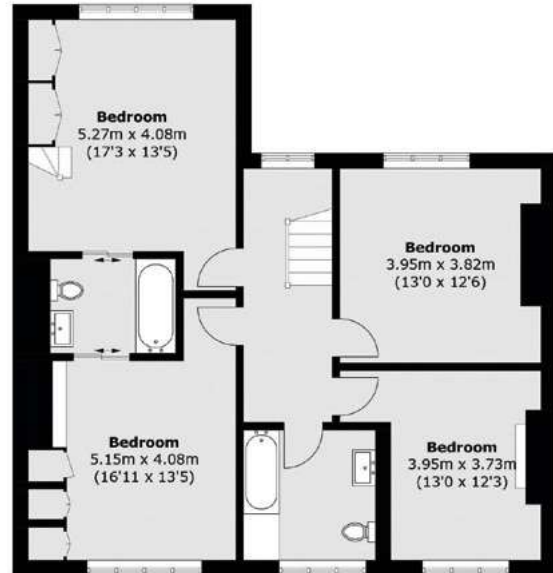




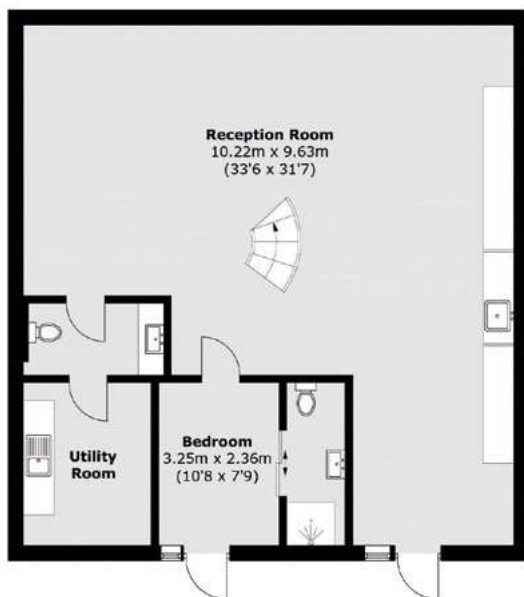
Mezzanine



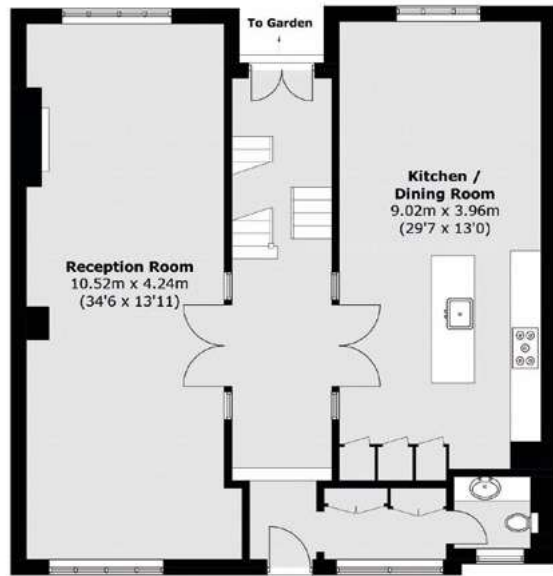
First Floor



Second Floor



Basement



Ground Floor

TOTAL APPROX. FLOOR AREA 4,506.3 SQ. FT (418.7 SQ. M) (INCLUDING MEZZANINE)

Energy Rating: C. We aim to make our particulars both accurate and reliable. However they are not guaranteed; nor do they form part of an offer or contract. If you require clarification on any points then please contact us, especially if you're travelling some distance to view. Please note that appliances and heating systems have not been tested and therefore no warranties can be given as to their good working order.



Dexters Chelsea & Belgravia
45 Sloane Avenue,
London, SW3 3DH
020 7590 9500

Dexters

Dexters