

Margravine Road, W6

£946 Per week

A large, four double bedroom house in between Hammersmith and Barons Court. The property has been refurbished and extended throughout, it has a large double reception room, eat in kitchen and a patio.

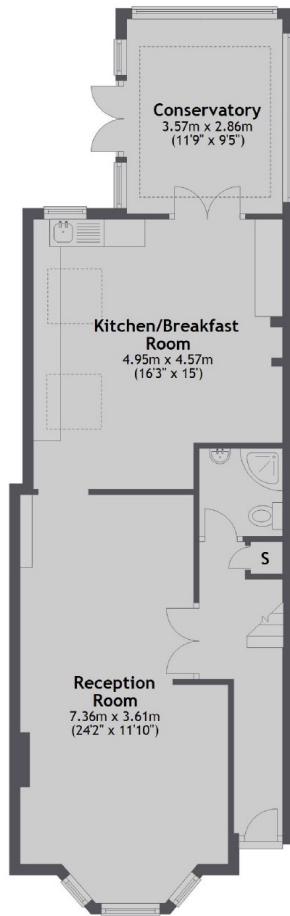
The property is on Margravine Road in Hammersmith, not far from the river and Hammersmith tube station.

Features

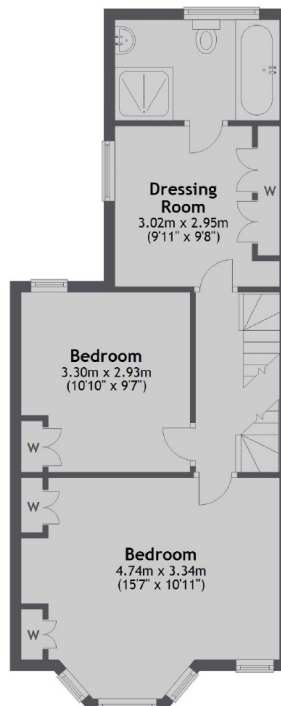
- Four Bedrooms
- Double Reception Room
- Conservatory
- Close To Hammersmith And Barons Court
- Three Bathrooms
- Refurbished And Extended

Margravine Road, London, W6

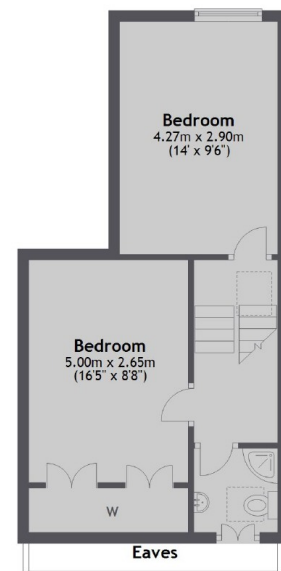
Ground Floor



First Floor



Second Floor



Total area: approx. 147.7 sq. metres (1590.3 sq. feet)

Contact

To arrange a viewing call our office on the number below or visit our website.



Energy Rating: D. We aim to make our particulars both accurate and reliable. However they are not guaranteed; nor do they form part of an offer or contract. If you require clarification on any points then please contact us, especially if you're traveling some distance to view. Please note that appliances and heating systems have not been tested and therefore no warranties can be given as to their good working order.