



Tierney Lane, W6

£1,000,000

Dexters



Tierney Lane, W6

OIEO £1,000,000. This immaculately presented two bedroom first floor apartment is set in the award winning Fulham Reach development and offers open plan living with direct access to a private balcony.

With views of the river Thames from the balcony, this modern apartment has an impressive outlook. Internally, the latest technology has been installed including a state of the art light system, air conditioning, underfloor heating and a 36 bottle wine cellar.

With easy access to both Hammersmith & Barons Court Stations this property offers transport solutions for the busy London commuter. As well as easy access to the A4, getting in and out of London could not be easier.

Fulham Reach has excellent on-site amenities including a 24 hour concierge service, secure underground parking, a resident's pool and spa, a gymnasium, a cinema and a games room. The property comes with a parking space.

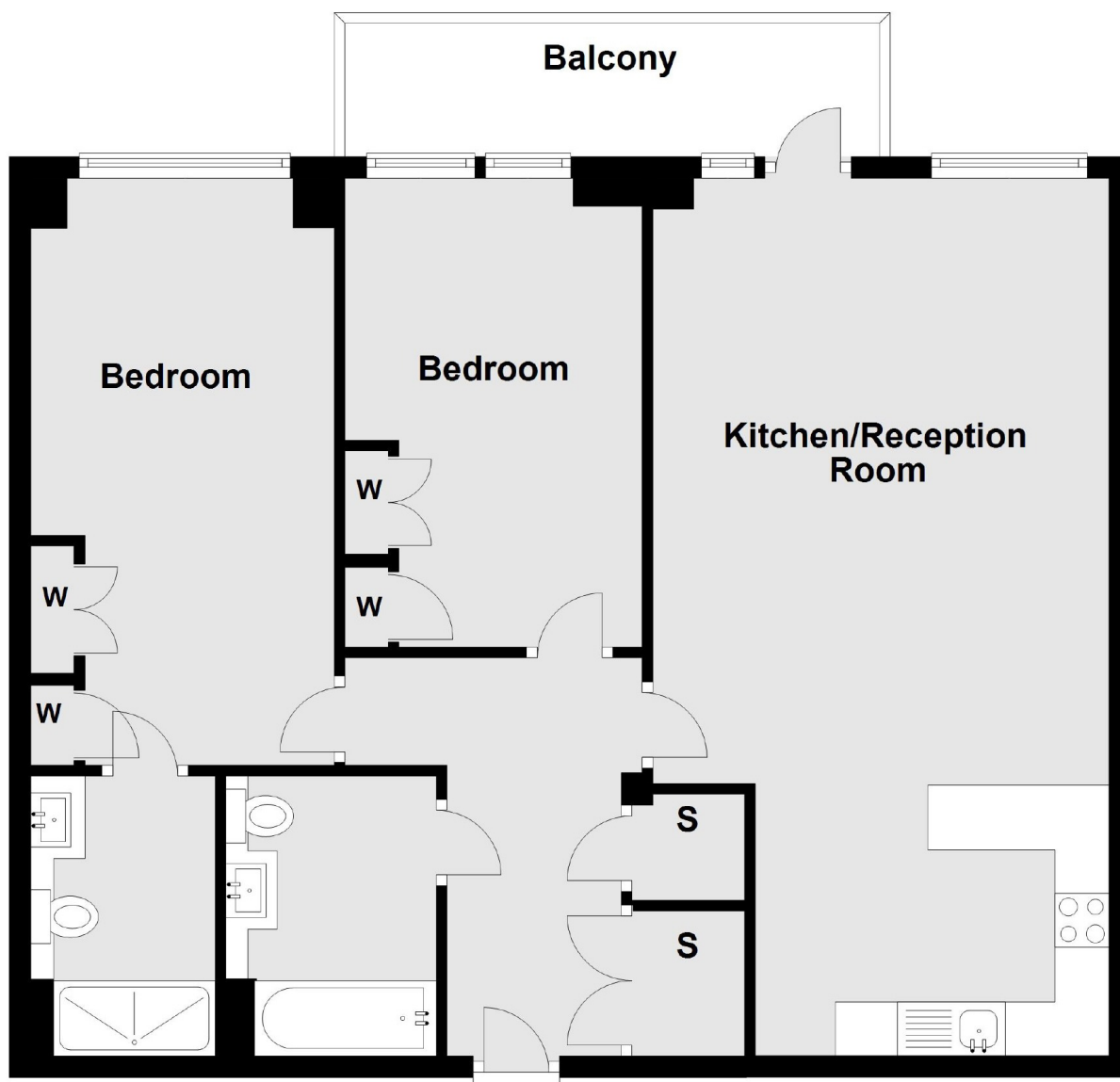
Located on the river front close to the famous River Cafe, as well as a variety of other pubs, restaurant and river walks. Within half a mile from Hammersmith tube station and just over half a mile from Barons Court tube station.

Features

- Two Bedrooms
- Two Bathrooms
- Balcony
- High Specification
- 24 Hour Concierge
- Pool and Gym



Tierney Lane, London, W6



First Floor