



Parr's Way, W6

£4,150,000

Dexters



Parr's Way, W6

This stunning third floor apartment in Fulham Reach is located on one of the most sought after stretches of the River Thames with views that stretch to Fulham and Barnes. The apartment is over 1800 square feet with three double bedrooms, all of which have en-suite marble bathrooms.

The spacious entrance hall leads towards the open plan living and kitchen area. With floor to ceiling windows and a wrap around balcony, the property provides a unique living space with river views.

Fulham Reach residents have access to all of the facilities the development has to offer including a gym, pool, sauna, cinema and a virtual golf room.

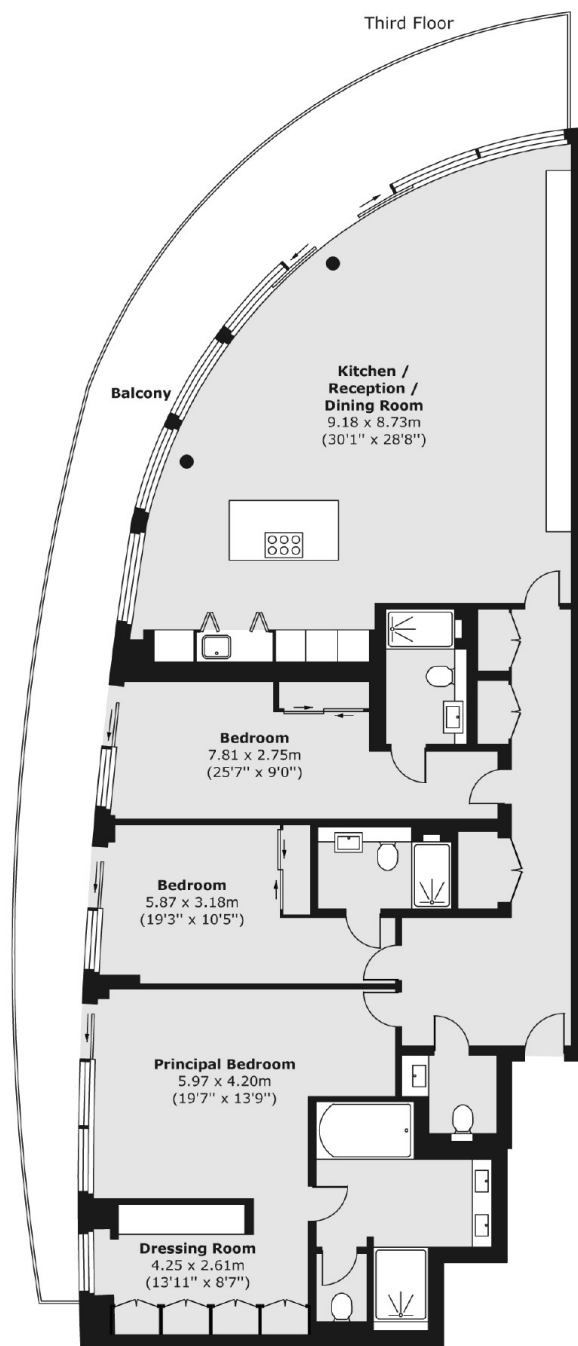
Fulham Reach has numerous restaurants and shops on site, as well as being just a short walk to the amenities of Hammersmith and the Underground Station which is serviced by the Circle, District, Piccadilly, and Hammersmith and City Lines.

Features

- Three Double Bedrooms
- Four Bathrooms
- Stunning Views
- Wrap Around Terrace
- Residents Health Club
- Secure Underground Parking



Parr's Way, London, W6



Total area (approx.) 184.18 sq. m (1,983 sq. ft)

Balcony area (approx.) 47.74 sq. m (514 sq. ft)

Dexters

Hammersmith
164-166 King Street
London
W6 0QU

Sales
020 8939 6061

Energy Rating: B. We aim to make our particulars both accurate and reliable. However they are not guaranteed; nor do they form part of an offer or contract. If you require clarification on any points then please contact us, especially if you're traveling some distance to view. Please note that appliances and heating systems have not been tested and therefore no warranties can be given as to their good working order.

 **RICS** | Regulated
Estate Agent
and Letting Agent

[dexters.co.uk](https://www.dexters.co.uk)