



Ravenscourt Road, W6

£1,338 Per week

A newly refurbished four bedroom family home located on a prime road next to Ravenscourt Park. The house which has been refurbished to a high standard, is arranged over three floors with access to a private garden and cellar. There are period features throughout. Further benefits include double glazed windows, security system and off-street parking.

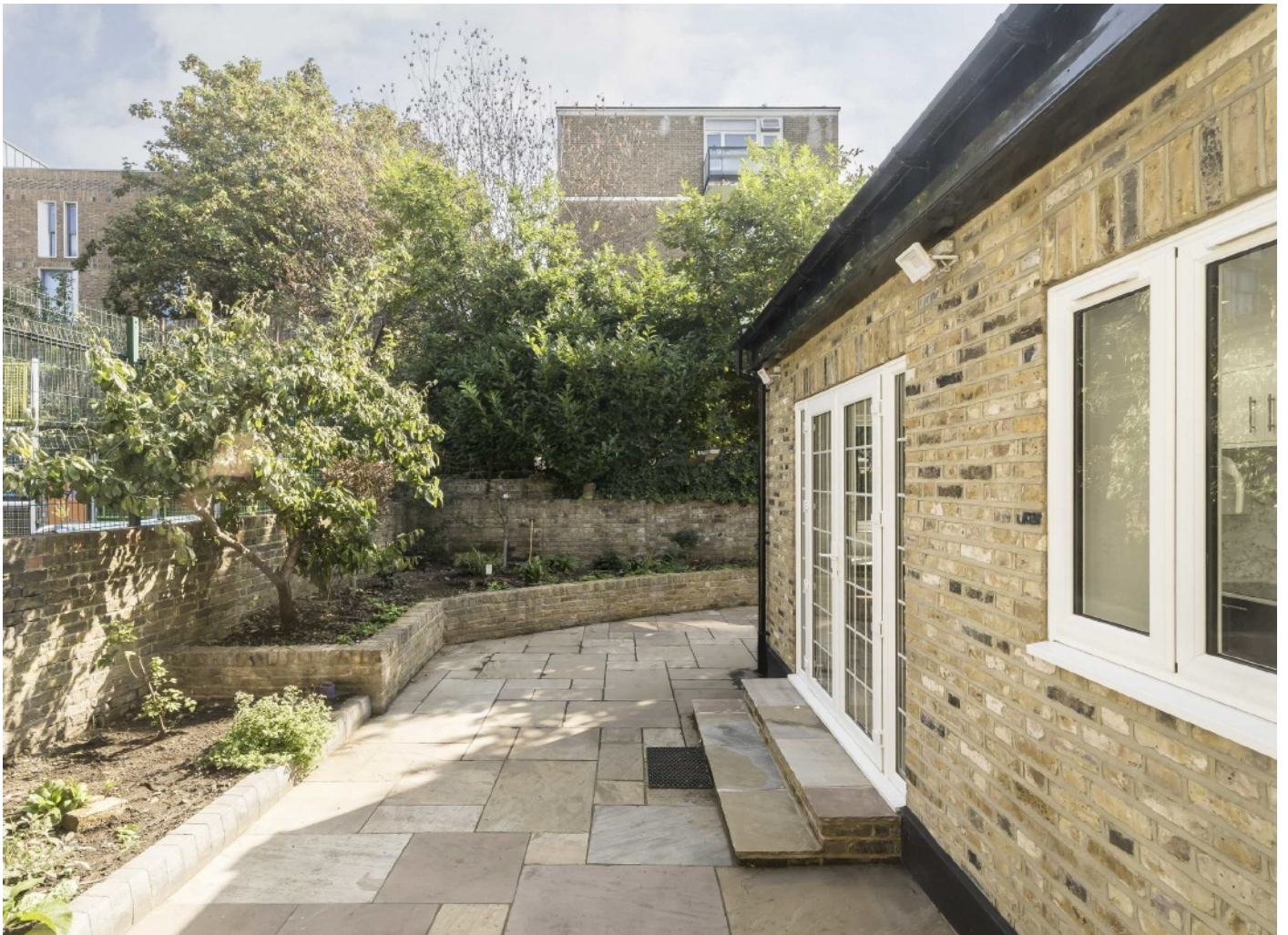
Ravenscourt Road is located moments from Ravenscourt Park and the station, with the local amenities of King Street nearby. The Thames Path is just over a quarter of a mile away.

Features

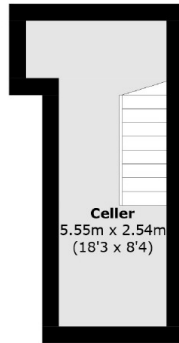
- Ravenscourt Park
- Four Bedrooms
- Two Bathrooms
- Off-Street Parking
- Private Garden
- Cellar



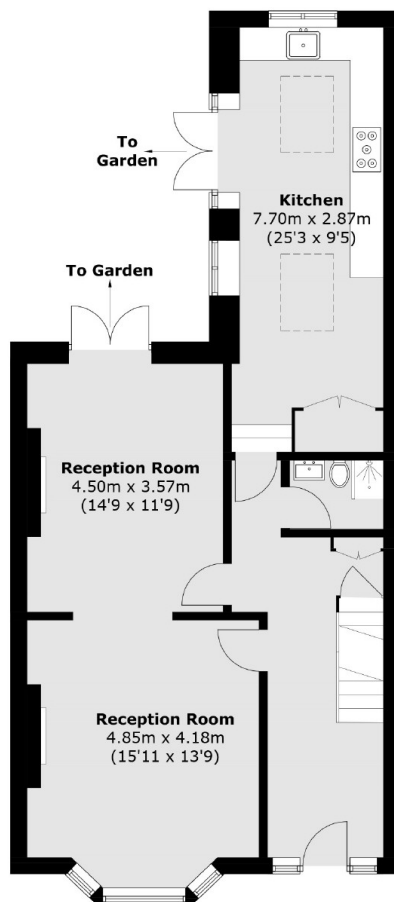
Ravenscourt Road, W6



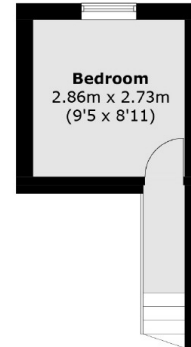
Ravenscourt Road, London, W6



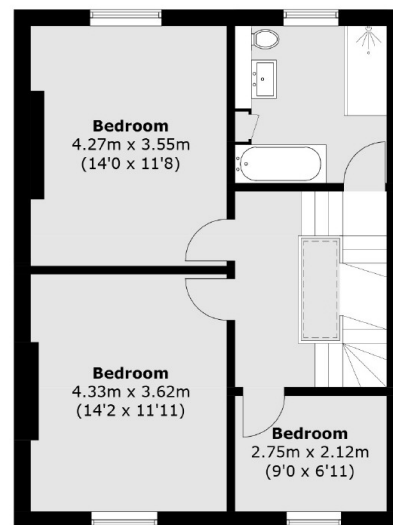
**Lower
Ground Floor**



Ground Floor



Second Floor



First Floor

Total area (approx.): 154.1 sq. m (1,658.7 sq. ft)
(Including Cellar)