



Stamford Brook Road, W6

£625,000

Offers in Excess of.

This two bedroom apartment in a converted church is arranged over two floors, its full of traditional features from the original building whilst still having a modern finish throughout. Further benefits include a private terrace coming off of the kitchen and off street parking.

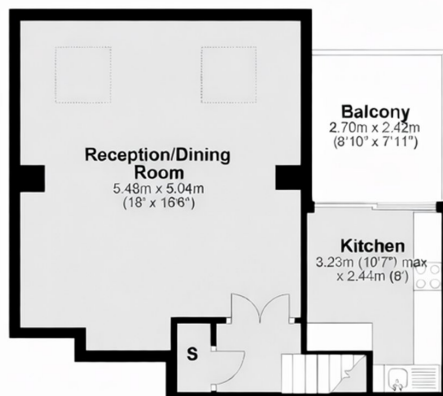
St Marys Court is closely located to Ravenscourt Park and a short distance to all amenities of Chiswick High Road and the riverside. Stamford Brook tube station is within minutes walk, offering excellent links to Central London.

Features

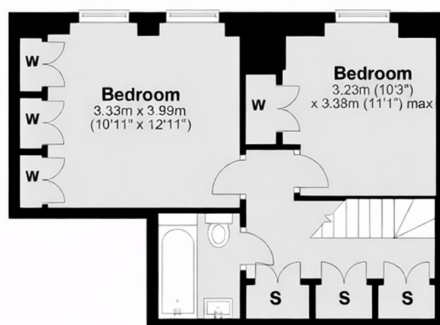
- Two Bedrooms
- Church Conversion
- Off Street Parking
- Traditional Features
- River Thames
- Stamford Brook Station

Stamford Brook Road, London, W6

Second Floor



First Floor



Main area: Approx. 74.1 sq. metres (797.4 sq. feet)
Plus balcony, approx. 6.5 sq. metres (70.4 sq. feet)