



Kilburn Park, NW6

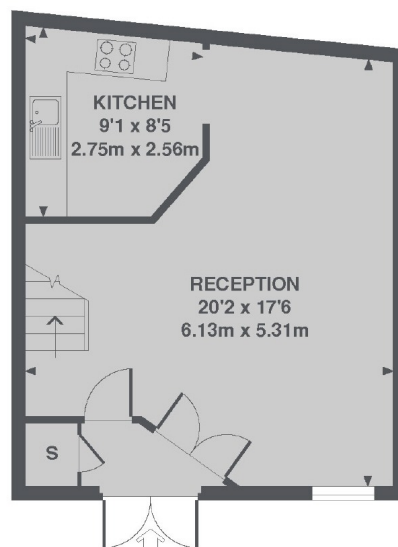
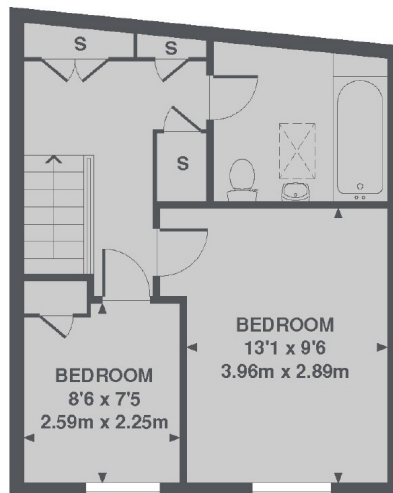
Rarely available two bedroom Mews house. With a 20' reception room with wood flooring and separate kitchen and the two double bedrooms and bathroom on the first floor.

Malvern Mews is a no-through residential street with great community spirit in a picturesque environment within half a mile of the many local shops, cafés, tubes and bus links of Maida Vale and Queen's Park.

Features

Mews House
Two Bedrooms
Large Reception
Private Road
Great Location
Freehold

Malvern Mews, London, NW6



TOTAL APPROX. FLOOR AREA 725 SQ. FT. (67.4 SQ. M.)

Contact

To arrange a viewing call our office on the number below or visit our website.



Energy Rating: C. We aim to make our particulars both accurate and reliable. However they are not guaranteed; nor do they form part of an offer or contract. If you require clarification on any points then please contact us, especially if you're traveling some distance to view. Please note that appliances and heating systems have not been tested and therefore no warranties can be given as to their good working order.