



## Maida Vale, W9

£419,000

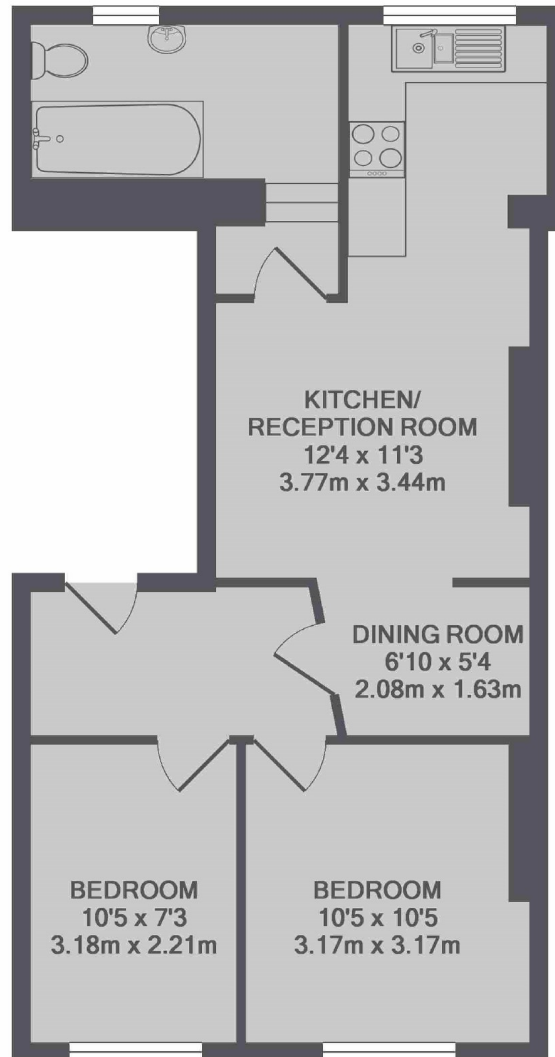
A spacious two double bedroom first floor flat, with an open plan kitchen/living area towards the rear, two equally sized bedrooms, and plenty of natural light throughout.

The flat is less than half a mile from multiple transport links to central London, as well as the picturesque canal of Little Venice. Harrow Road offers an array of shops, restaurants and cafés.

### Features

- Two Double Bedrooms
- First Floor Flat
- Chain Free
- Open Plan
- Period conversion
- Long Lease

## Harrow Road, London, W9



TOTAL APPROX. FLOOR AREA 553 SQ.FT. (51.3 SQ.M.)

### Contact

To arrange a viewing call our office on the number below or visit our website.



Energy Rating: C. We aim to make our particulars both accurate and reliable. However they are not guaranteed; nor do they form part of an offer or contract. If you require clarification on any points then please contact us, especially if you're traveling some distance to view. Please note that appliances and heating systems have not been tested and therefore no warranties can be given as to their good working order.