

Tollgate Gardens, NW6

£461 Per week

Brand newly built two double bedroom, two bathroom flat on the second floor with an open plan kitchen reception room and a roof terrace. The reception room has wooden flooring and there is lift access as well as a day concierge.

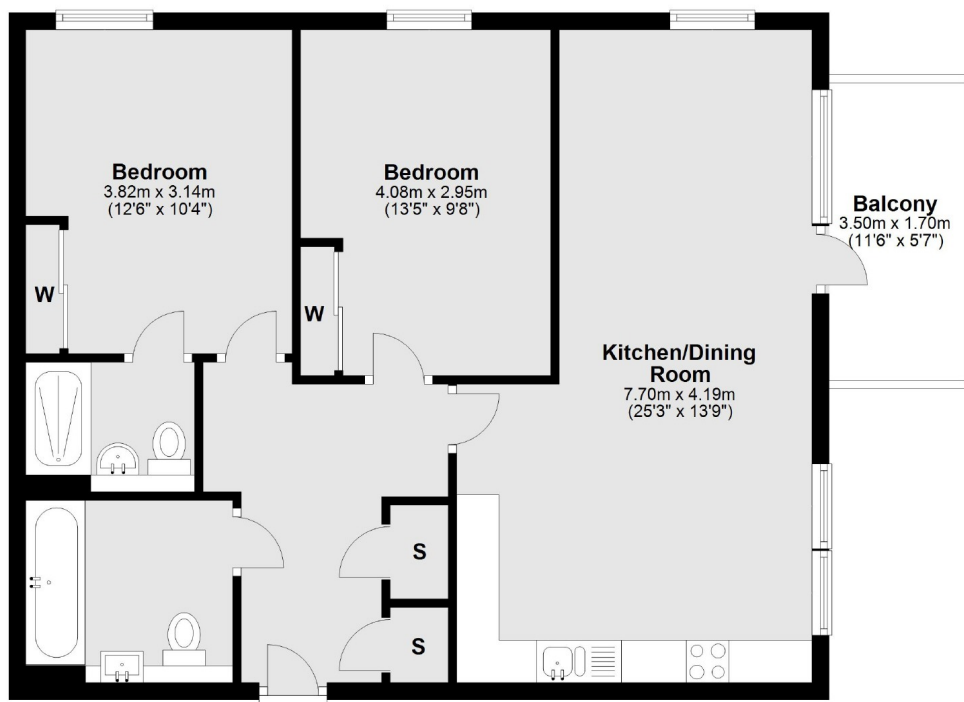
St David's House is located a short walk from Kilburn Park tube station giving you quick access to the City and Central London on the Bakerloo Line.

Features

- Two Double Bedrooms
- Two Bathrooms
- Open Plan Kitchen Reception Room
- Roof Terrace
- Newly Built
- Kilburn Park Station

Tollgate Gardens, London, NW6

Second Floor



Main area: Approx. 71.4 sq. metres (768.3 sq. feet)
Plus balconies, approx. 6.0 sq. metres (64.1 sq. feet)

Contact

To arrange a viewing call our office on the number below or visit our website.



Energy Rating: . We aim to make our particulars both accurate and reliable. However they are not guaranteed; nor do they form part of an offer or contract. If you require clarification on any points then please contact us, especially if you're traveling some distance to view. Please note that appliances and heating systems have not been tested and therefore no warranties can be given as to their good working order.