



Warrington Crescent, W9

£1,250,000

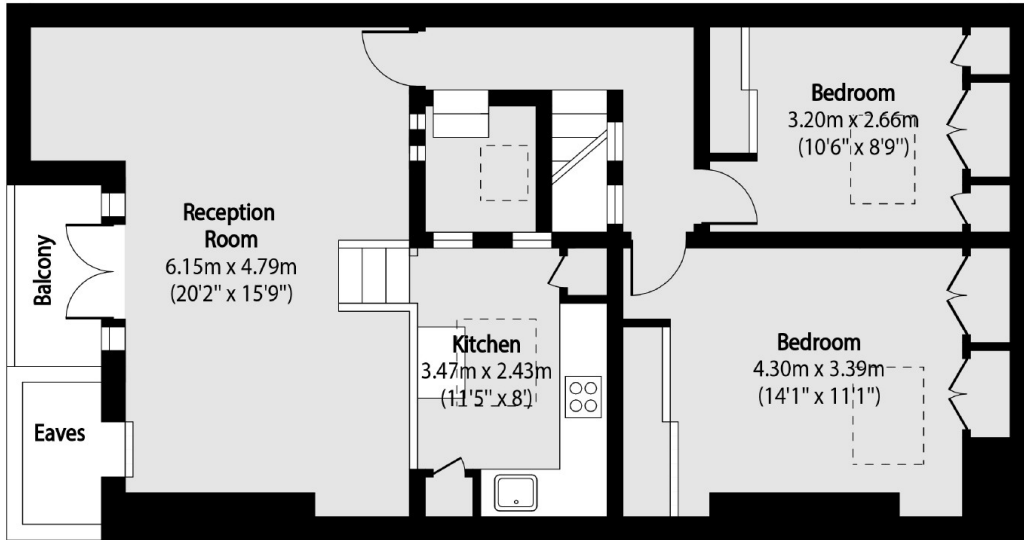
A recently renovated top floor flat set in a charming Victorian conversion. This stunning property in one of Maida Vale's most sought after roads comes complete with two double bedrooms, reception room with kitchen mezzanine and a balcony overlooking the landscaped communal gardens.

Warrington Crescent is one of the most popular roads in Maida Vale, tree-lined with period buildings and offering easy access to Formosa Street, Little Venice and Warwick Avenue, for a great selection of shops, bars cafés, and restaurants.

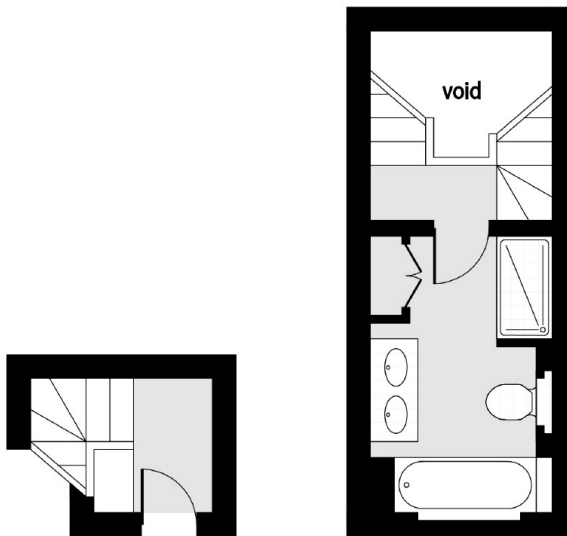
Features

- Recently Renovated
- Period Conversion
- Two Double Bedrooms
- Stunning Views
- Balcony & Communal Gardens
- Great Location

Warrington Crescent, Maida Vale, W9



Third Floor



Second Floor

Mezzanine

Total area (approx): 84.73 sq m (912 sq. ft)

(Excluding Eaves)

Balcony total area (approx): 2.53 sq m (27 sq. ft)