



Randolph Avenue, W9

£3,250,000

Dexters



Randolph Avenue, W9

A recently renovated three bedroom penthouse extending approximately 1,874 sq ft. This property features far-reaching views, generous entertaining space, two private balconies, an impressive reception room, a separate kitchen conveniently positioned adjacent to the reception space and excellent natural light throughout.

Set in a portered block, this property comes complete with an impressive principal bedroom suite with extensive fitted storage, a luxurious en suite bathroom and access to a second private balcony. Two further double bedrooms are served by additional bath and shower rooms, providing flexible accommodation for family living or guests. A spacious entrance hall and ample built-in storage further enhance the practicality of the apartment.

Melbourne Court is one of Maida Vale's most sought-after residential buildings, ideally located on the prestigious Randolph Avenue, moments from the picturesque waterways of Little Venice, the boutiques and cafés of Clifton Road and the excellent transport links provided by Warwick Avenue underground station.

Features

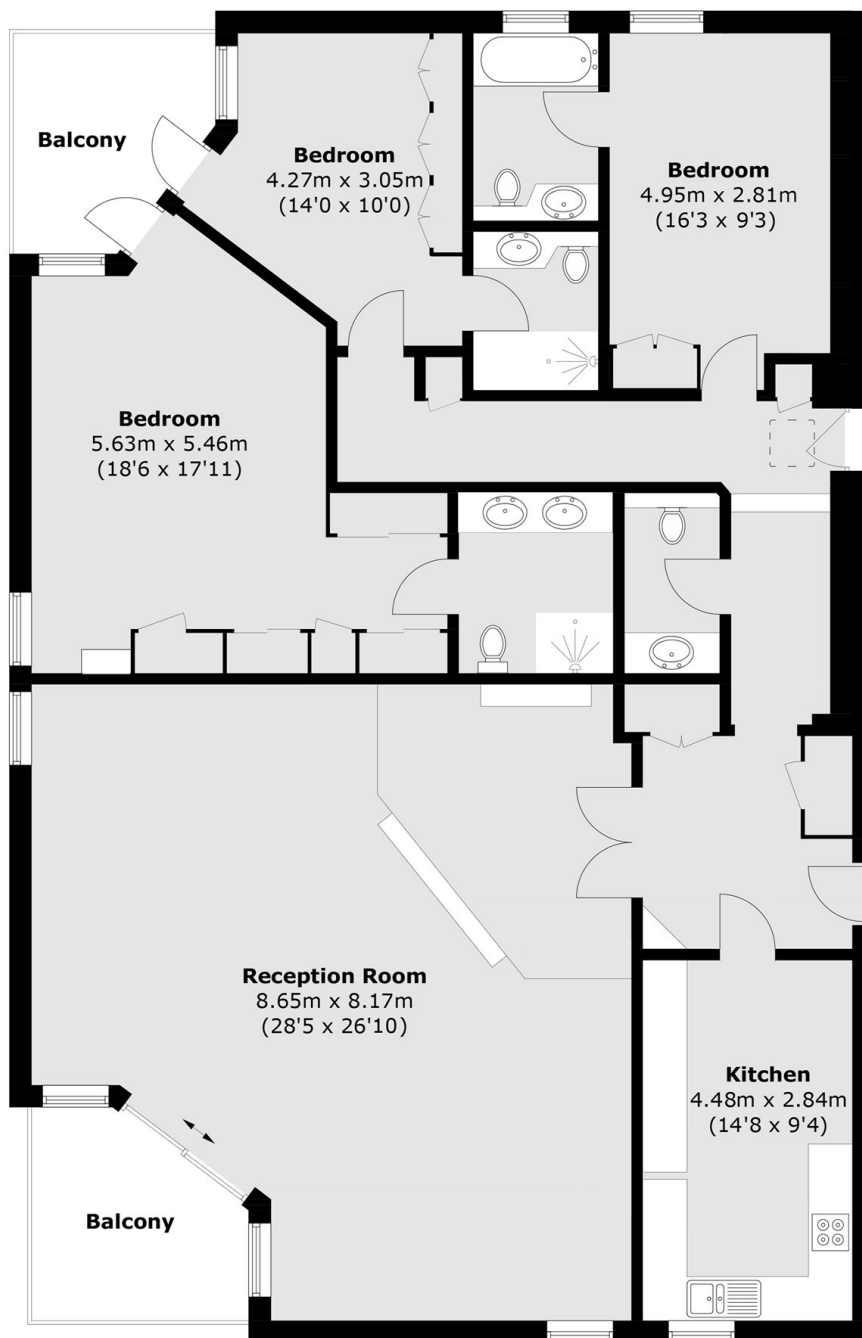
- Premium Penthouse
- Three Double Bedrooms
- Portered Block
- Recently Refurbished
- New Lease of 999
- Great Location







Randolph Avenue, Maida Vale, W9



Eighth Floor

Total area (approx.): 174.1 sq. m (1874.0 sq. ft)
Balcony area : 14.3 sq. m (153.9 sq. ft)