



Sheldon Square, W2

£750 Per week

A spacious and impressive two bedroom apartment on the ninth floor of a portered building in Paddington Basin. With lift access and two bathrooms, the property has dual aspect views and two receptions.

Moments from Little Venice, the nearest station is Paddington, with tube links and access to the Heathrow Express, and the A40 for motorists is close by.

Features

- Two Bedrooms
- Two Bathrooms
- Two Receptions
- Portered
- Lift Access
- Dual Aspect Views



Sheldon Square, London, W2

With wooden floors, this modern and newly refurbished apartment has a private balcony and a large kitchen with dishwasher. Both bedrooms are a good size double with storage and the master is en suite.

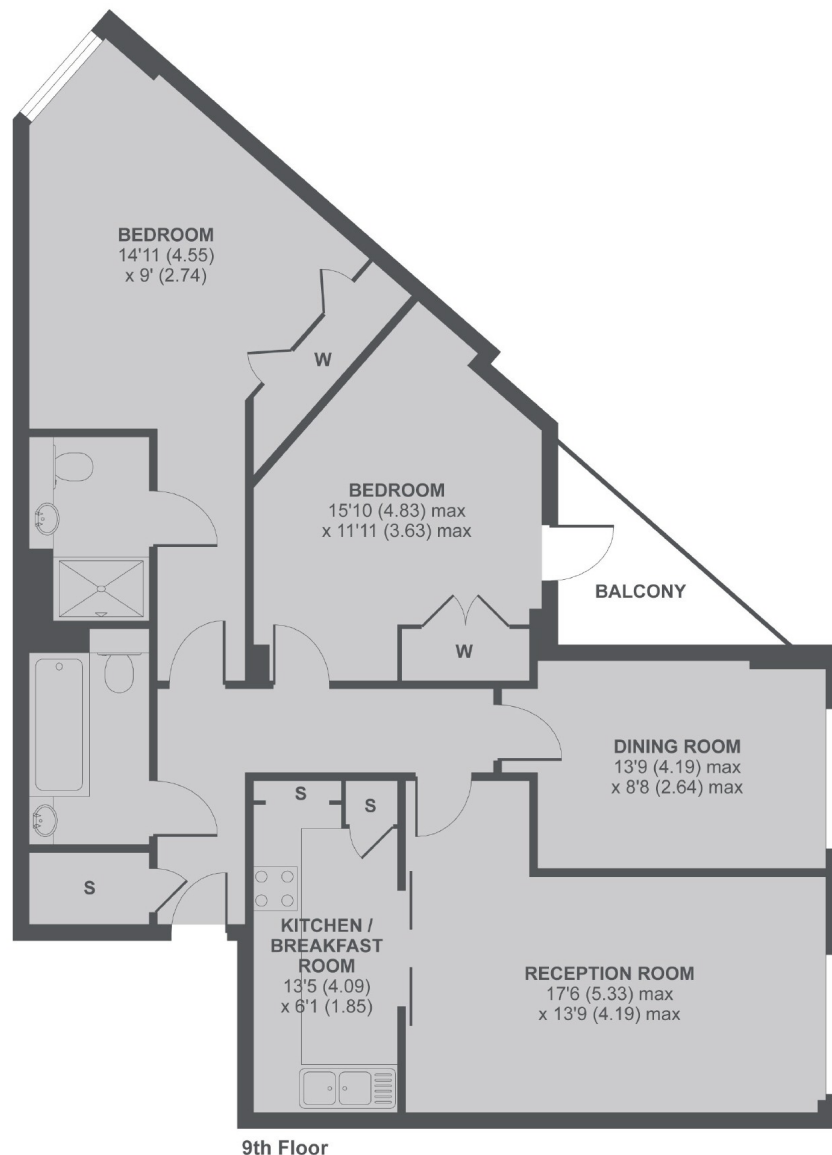
The second reception would be a great space to dine or to entertain and the reception has views towards the canals of Little Venice and much further beyond on a clear summers day.

The property would ideally suit a professional couple or sharers looking for a London home in a great location. Paddington basin has a number of shops, bars and restaurants close by and is easily accessible for local transport.





Sheldon Square, London, W2



Sheldon Square W2

MAIN HOUSE APPROX FLOOR AREA 960 SQ.FT 89.1 SQ.M

Copyright nichecom.co.uk 2017 REF : 216941

Contact

To arrange a viewing call our office on the number below or visit our website.



Energy Rating: C. We aim to make our particulars both accurate and reliable. However they are not guaranteed; nor do they form part of an offer or contract. If you require clarification on any points then please contact us, especially if you're traveling some distance to view. Please note that appliances and heating systems have not been tested and therefore no warranties can be given as to their good working order.