



Conduit Mews, W2

£3,299,995

Dexters



Conduit Mews, London, W2

A fabulous, rarely available opportunity to acquire a four double bedroom mews terraced house offered for sale with an integral garage and rear garden.

Presented to a high standard throughout, this family home has an outstanding 2,344 Sq.Ft/217 Sq.M Of versatile accommodation. With a kitchen/dining/family room with access to garden.

Master bedroom suite, a shower room, plus two cloakrooms and a double reception room on the first floor. Air-Con is also available on the top floor.

Centrally located in a cobbled street in a picturesque, tranquil setting with the convenience of Paddington Station, Lancaster Gate underground station, as well as Hyde Park. Crossrail will offer faster journeys into the City and towards Canary Wharf.

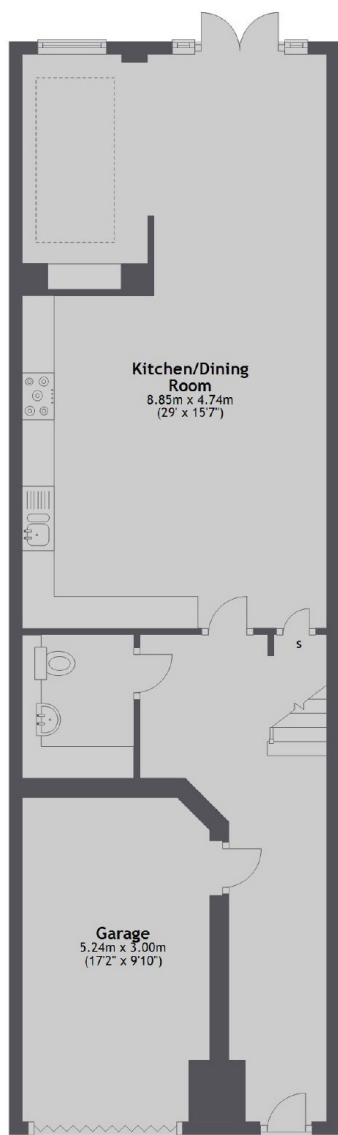
Features

- Four Bedrooms
- Two Receptions
- Integral Garage
- Rear Garden
- Centrally Located
- No Forward Chain

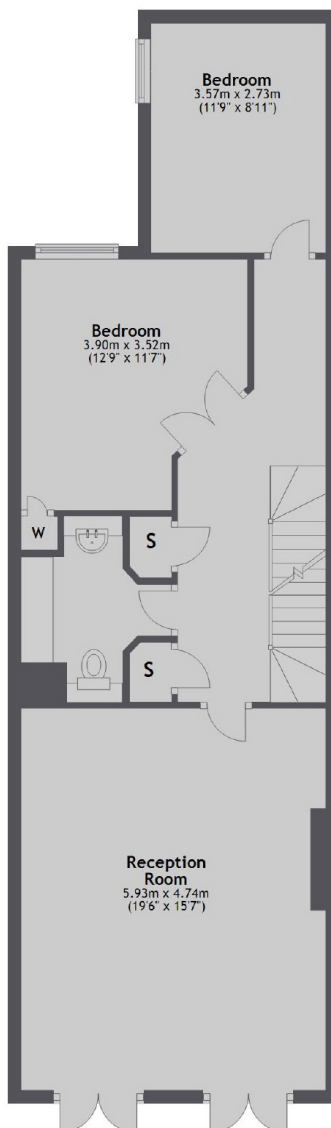


Conduit Mews, London, W2

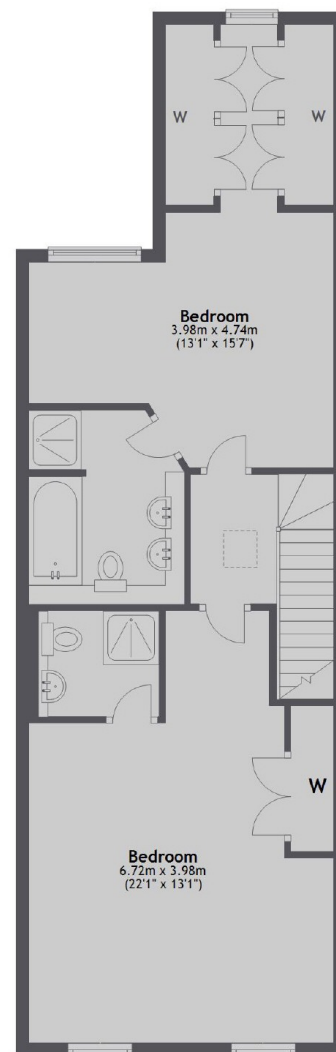
Ground Floor



First Floor



Second Floor



Total area: approx. 217.8 sq. metres (2344.5 sq. feet)

Dexters

Hyde Park and Bayswater
4-5 Spring Street, London, W2
3RA
Sales
020 7298 1550

Energy Rating: C. We aim to make our particulars both accurate and reliable. However they are not guaranteed; nor do they form part of an offer or contract. If you require clarification on any points then please contact us, especially if you're traveling some distance to view. Please note that appliances and heating systems have not been tested and therefore no warranties can be given as to their good working order.

RICS | Regulated
Estate Agent
and Letting Agent

dexters.co.uk