



Lancaster Terrace, W2

£1,175,000

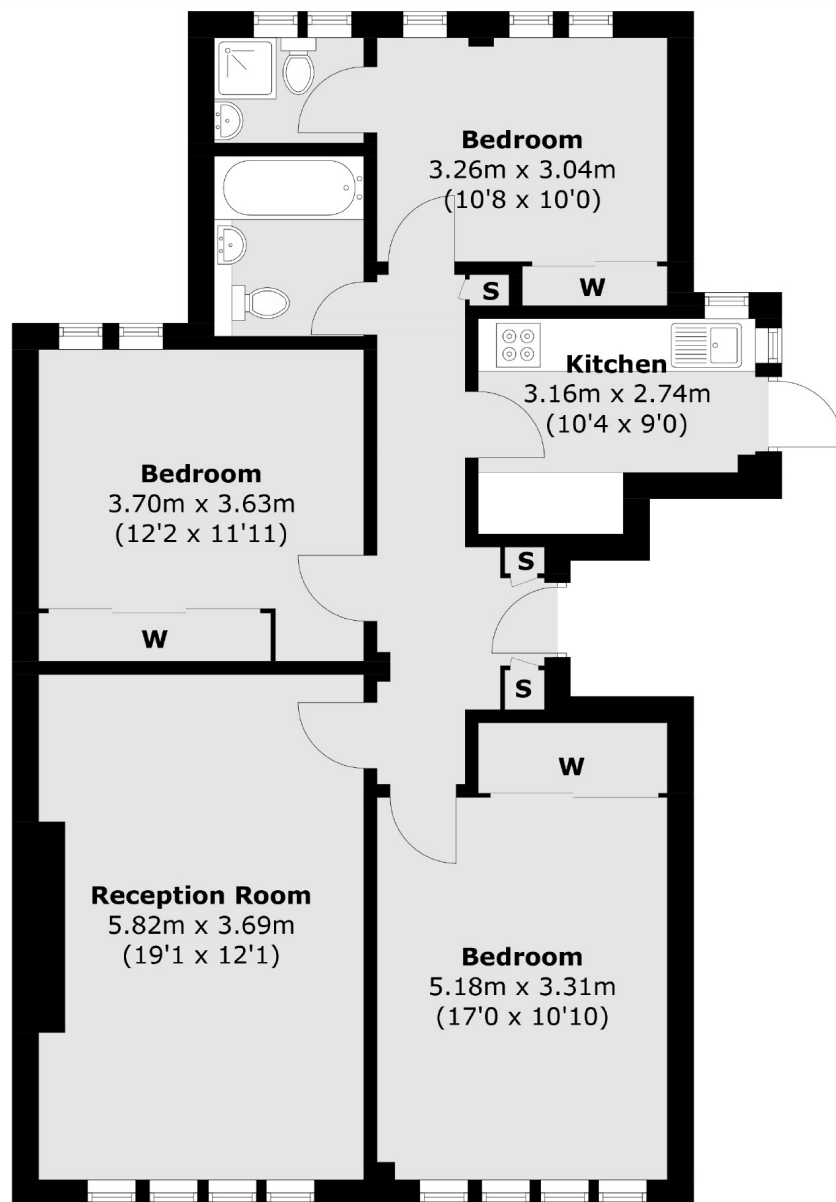
A great opportunity to acquire a three double bedroom, fourth floor within a 1930's purpose built apartment just moments from Hyde Park. The property has lift access, separate kitchen and is offered with Share of Freehold.

Maitland Court is well placed, adjacent to Hyde Park. Closest transport links include Lancaster Gate and Paddington Station, offering overground and underground services.

Features

- Three Double Bedrooms
- Porter
- Separate Kitchen
- Lift Service
- Near Hyde Park
- Share Of Freehold

Lancaster Terrace, London, W2



Fourth Floor

Total area (approx.): 84.5 sq. m (909.5 sq. ft)

Contact

To arrange a viewing call our office on the number below or visit our website.



Energy Rating: C. We aim to make our particulars both accurate and reliable. However they are not guaranteed; nor do they form part of an offer or contract. If you require clarification on any points then please contact us, especially if you're traveling some distance to view. Please note that appliances and heating systems have not been tested and therefore no warranties can be given as to their good working order.