



Sussex Gardens, W2

£692 Per week

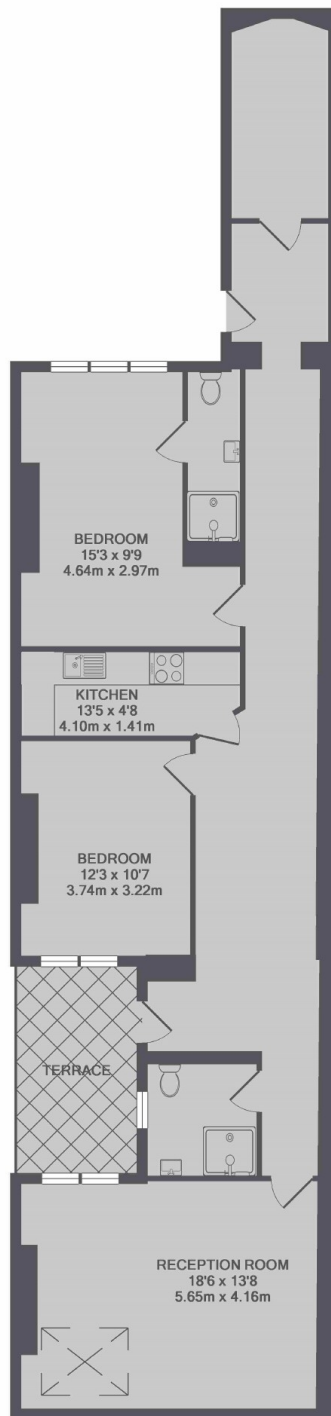
A spacious two bedroom flat with two bathrooms and a private patio. With wooden floors and two double bedrooms, this modern property would ideally suit the busy professionals looking for a great location.

Moment from Hyde Park and Paddington station, Sussex Gardens provides easy access to the A40 for motorists and is within easy reach of the West End.

Features

- Two Double Bedrooms
- Private Patio
- Wood floors
- Two Bathrooms
- Modern Interior
- Hyde Park

Sussex Gardens, London, W2



TOTAL APPROX. FLOOR AREA 1215 SQ.FT. (112.8 SQ.M.)

Dexters

Hyde Park and Bayswater
4-5 Spring Street
London
W2 3RA
Lettings
020 7298 1560

Energy Rating: C. We aim to make our particulars both accurate and reliable. However they are not guaranteed; nor do they form part of an offer or contract. If you require clarification on any points then please contact us, especially if you're traveling some distance to view. Please note that appliances and heating systems have not been tested and therefore no warranties can be given as to their good working order.

 **RICS** | Regulated
Estate Agent
and Letting Agent

[dexters.co.uk](https://www.dexters.co.uk)