



Star Street, W2

£403 Per week

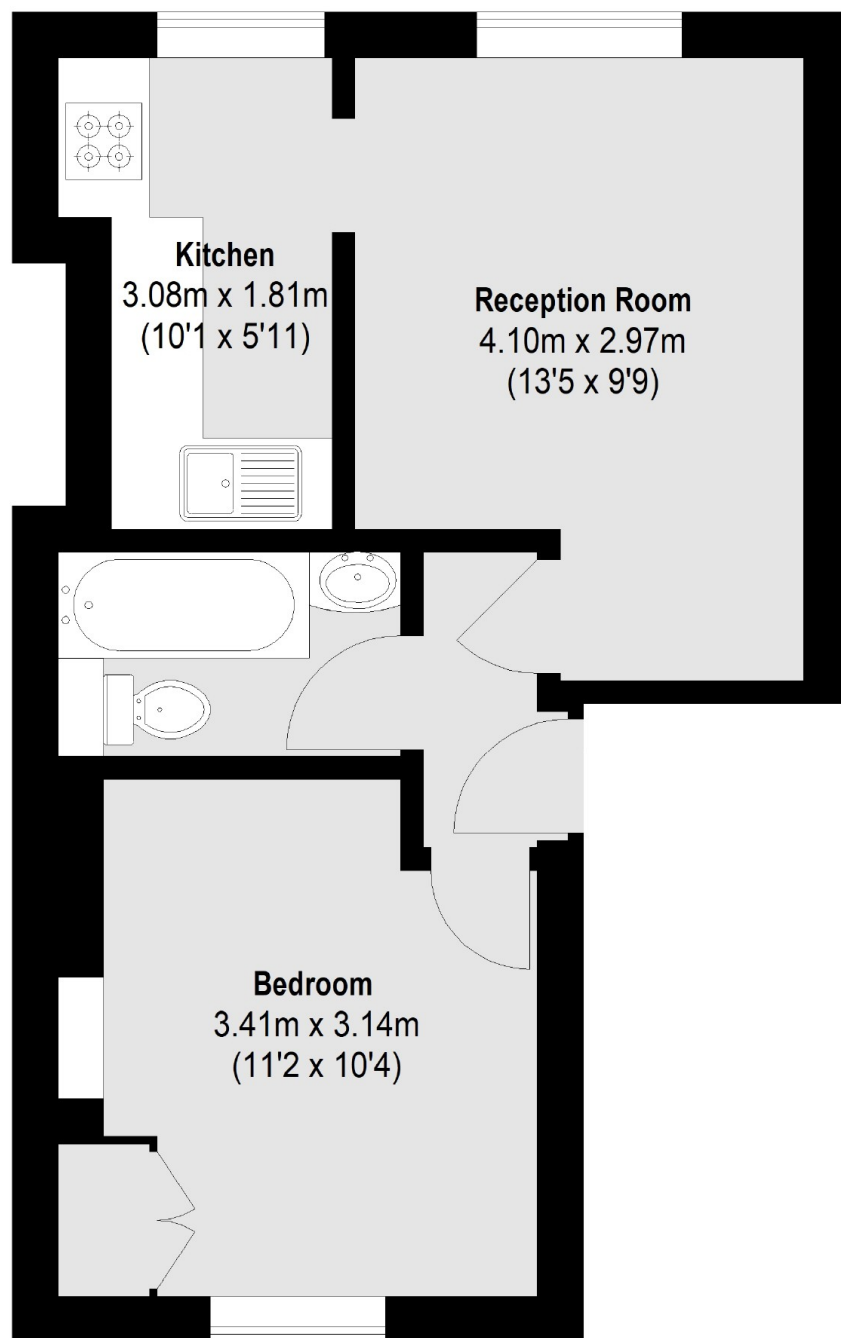
A recently refurbished one bedroom apartment in a Victorian period conversion. There is a separate kitchen, built in wardrobes and new carpets throughout.

Moments from Praed Street, St Marys Hospital and Paddington Station, the property is close to the shops of Connaught Village and less than a mile away from Hyde Park.

Features

One Bedroom
Separate Kitchen
Recently Refurbished
Period Conversion
Hyde Park

Star Street, London, W2



Total area (approx.): 32.25 sq. m (347 Sq. ft)