



Hyde Park Square, W2

£1,185,000

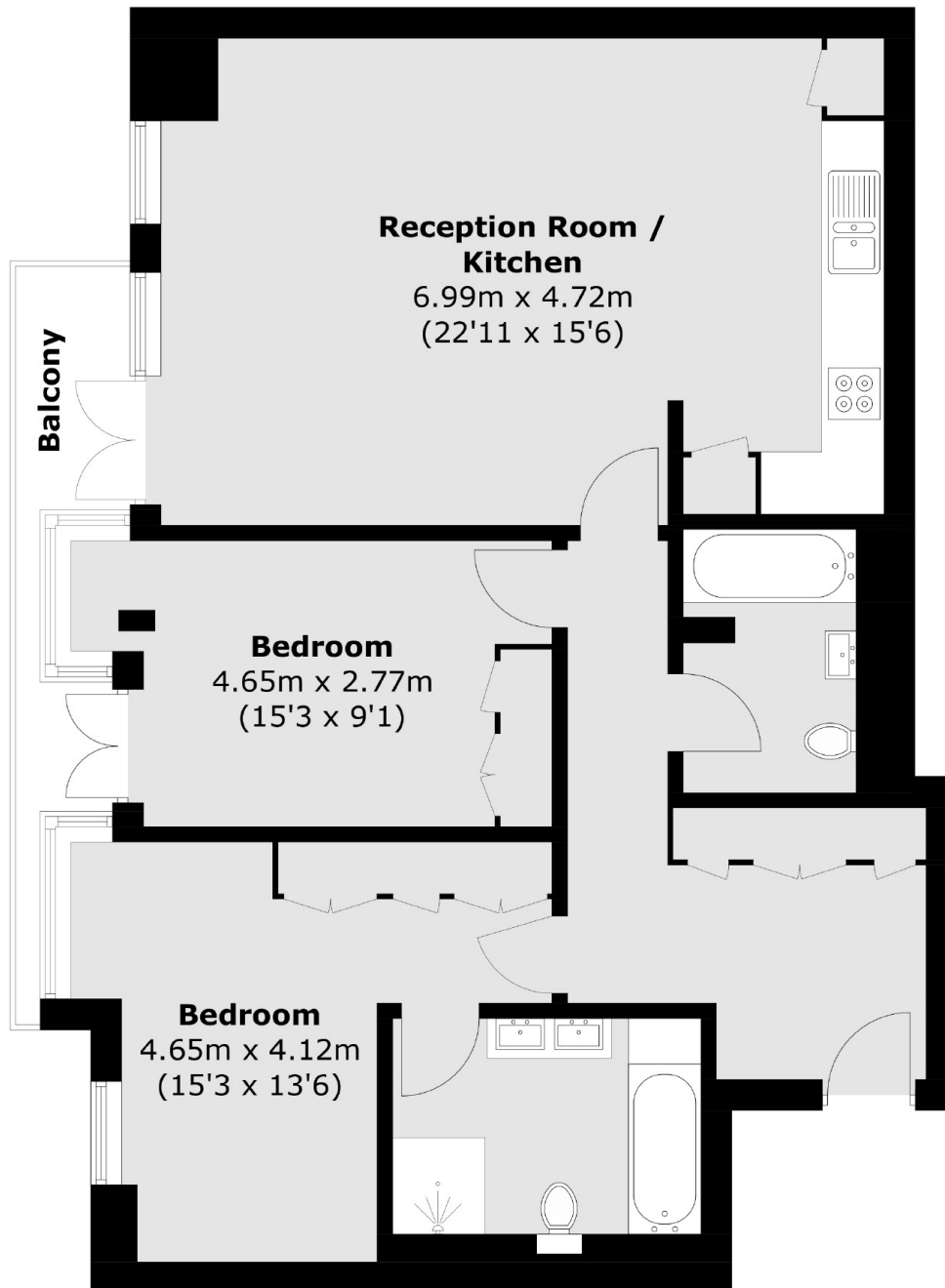
A lateral two double bedroom, two bathroom apartment in modern portered building - with a lift and off street parking. Presented in good order throughout and with private balconies off the open-plan kitchen and reception room and one of the bedrooms, this is an ideal home or pied-a-terre for anyone looking for luxury and convenience.

Hyde Park Square is conveniently located for Paddington Station, giving access across and out of London and towards Heathrow. Hyde Park, Marble Arch and Oxford Street are close by and there's plenty of local shops restaurants and boutiques to choose from.

Features

- Two Double Bedrooms
- Two Bathrooms
- Lift and Porter
- Private Balcony
- Off Street Parking
- Private Storage Vault

Hyde Park Square, London, W2



Total internal area (approx.): 84.0 sq. m (904.4 sq. ft)
Balcony: 4.7 sq. m (50.6 sq. ft)

Dexters

Hyde Park and Bayswater
4-5 Spring Street
London
W2 3RA
Sales
020 7298 1550

Energy Rating: B. We aim to make our particulars both accurate and reliable. However they are not guaranteed; nor do they form part of an offer or contract. If you require clarification on any points then please contact us, especially if you're traveling some distance to view. Please note that appliances and heating systems have not been tested and therefore no warranties can be given as to their good working order.

 **RICS** | Regulated
Estate Agent
and Letting Agent

[dexters.co.uk](https://www.dexters.co.uk)