



Gloucester Terrace, W2

£855,000

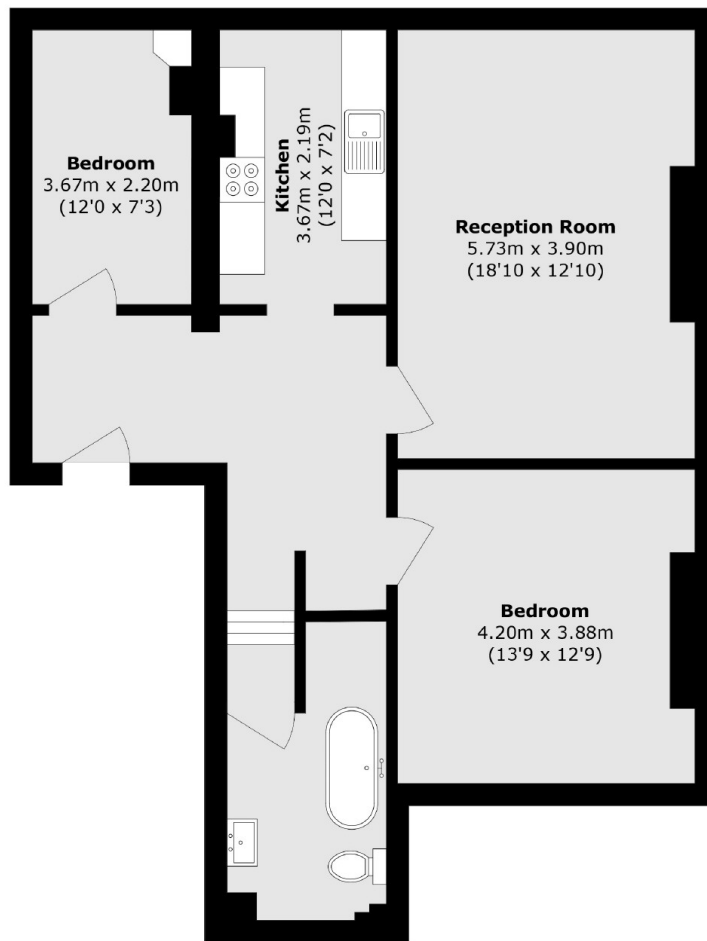
A spacious second floor apartment in a smart white stucco built terraced building. The property is presented to a good standard throughout, with two bedrooms, an open plan reception and dining room and separate kitchen.

Gloucester Terrace is conveniently placed for the facilities and amenities available in Queensway. Lancaster Gate and Paddington stations are also located nearby.

Features

- Two Bedrooms
- Second Floor
- Separate Kitchen
- Victorian Conversion
- Close to Hyde Park
- Share Of Freehold

Gloucester Terrace, London, W2



Total area (approx.): 82.0 sq. m (882.6 sq. ft)

Dexters

Hyde Park and Bayswater
4-5 Spring Street
London
W2 3RA
Sales
020 7298 1550

Energy Rating: C. We aim to make our particulars both accurate and reliable. However they are not guaranteed; nor do they form part of an offer or contract. If you require clarification on any points then please contact us, especially if you're traveling some distance to view. Please note that appliances and heating systems have not been tested and therefore no warranties can be given as to their good working order.

 **RICS** | Regulated
Estate Agent
and Letting Agent

[dexters.co.uk](https://www.dexters.co.uk)