



Westbourne Terrace, W2

£634 Per week

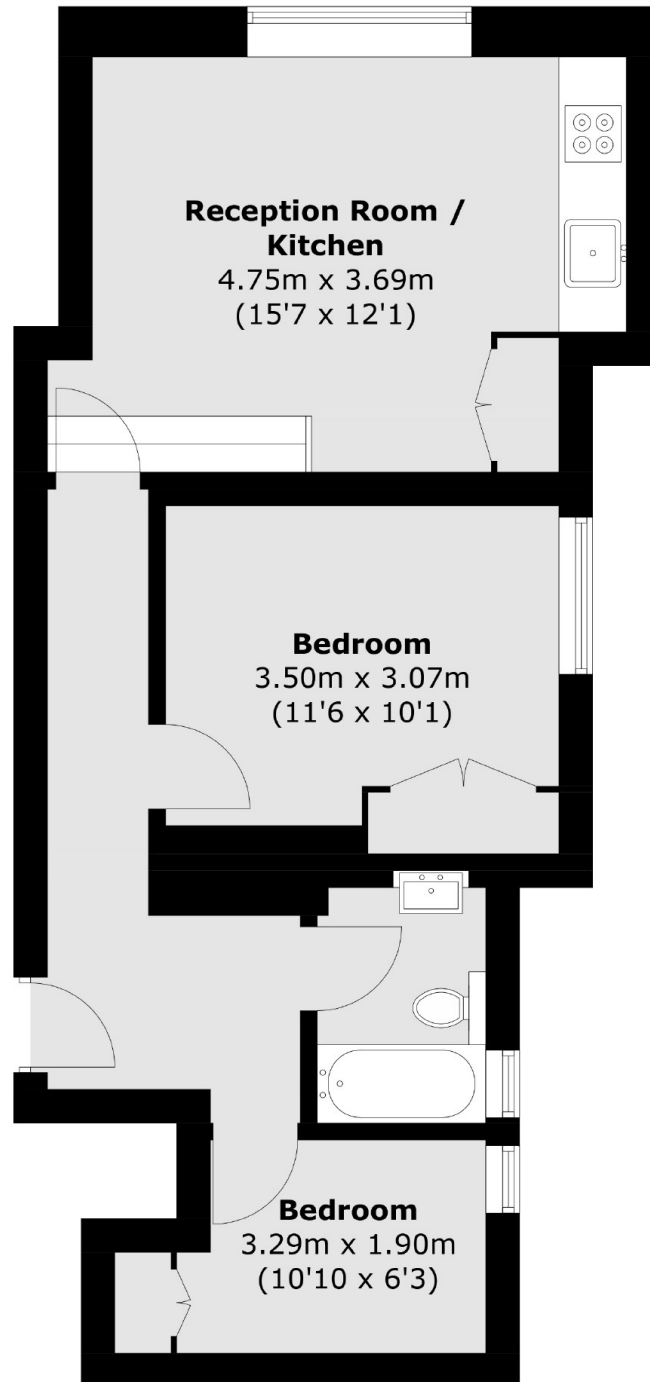
A spacious two double bedroom apartment in a Victorian period conversion. The property benefits from an open plan reception with a modern fitted kitchen.

Found near the shops, bars and restaurants of Queensway and Westbourne Grove, Paddington and Lancaster Gate are the nearest tubes.

Features

Two Bedrooms
Spacious Reception
Victorian Period Conversion
Ample Storage

Westbourne Terrace,
London, W2



Total area (approx.): 47.5 sq. m (511.3 sq. ft)