



Sussex Gardens, W2

£795 Per week

A newly refurbished three bedroom apartment finished to a high standard throughout. The property benefits from an abundance of natural light and provides the perfect living space for professional sharers looking for an easy commute into town.

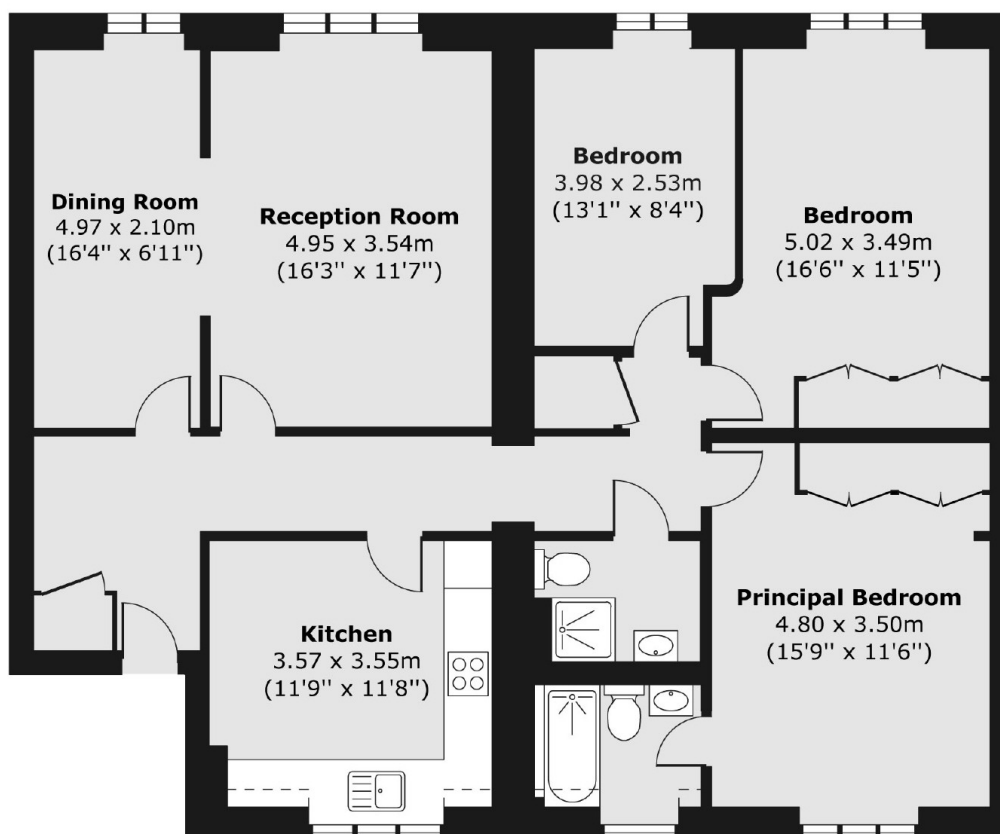
Located just behind Lancaster Gate the property provides easy access to the vast green space of Hyde Park in addition to theatres, restaurants and bars of the West End.

Features

- Spacious Apartment
- Newly Refurbished
- Three Double Bedrooms
- En Suite Bathroom
- Eat In Kitchen
- Built In Storage

Sussex Gardens, London, W2

Fourth Floor



Total area (approx.) 112.06 sq. m (1,206 sq. ft)