



Lancaster Terrace, W2

£1,846 Per week

Introducing a newly refurbished, stunning property in Maitland court. Situated on the fifth floor, with lift access. This property provides beautiful, scenic views of the surrounding area. This includes an impressive view of Hyde park from the properties private balcony. Whilst Inviting lots of daylight into the rooms.

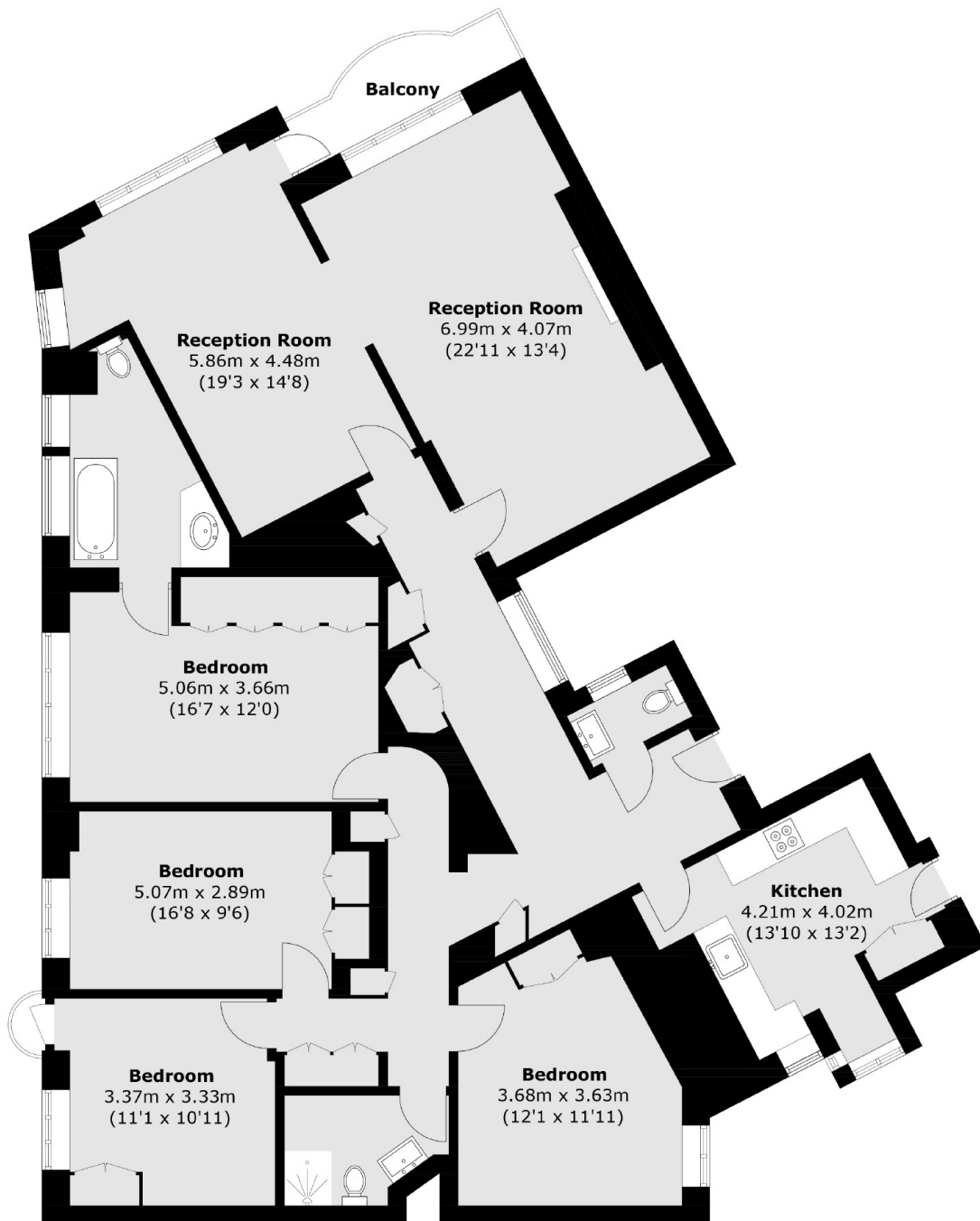
This property offers a bright a spacious living space with wooden floors through out. And consisting of four double bedrooms, there is plenty of storage and potential for a working space. You can also enjoy this flat with the added security of a on site porter.

On the doorstep of Hyde Park, the nearest station is Lancaster Gate , Paddington Station and the Heathrow Express is close by.

Features

- Digital Furniture Added
- Four Double Bedroom
- New Refurbishment
- Wooden Floors
- Lift Access
- Porter

Lancaster Terrace, London, W2



Total area (approx.): 172.3 sq. m (1,854.6 sq. ft)
Balcony area (approx.): 3.9 sq. m (42.0 sq. ft)