

The City, EC2Y

£1,200 Per week

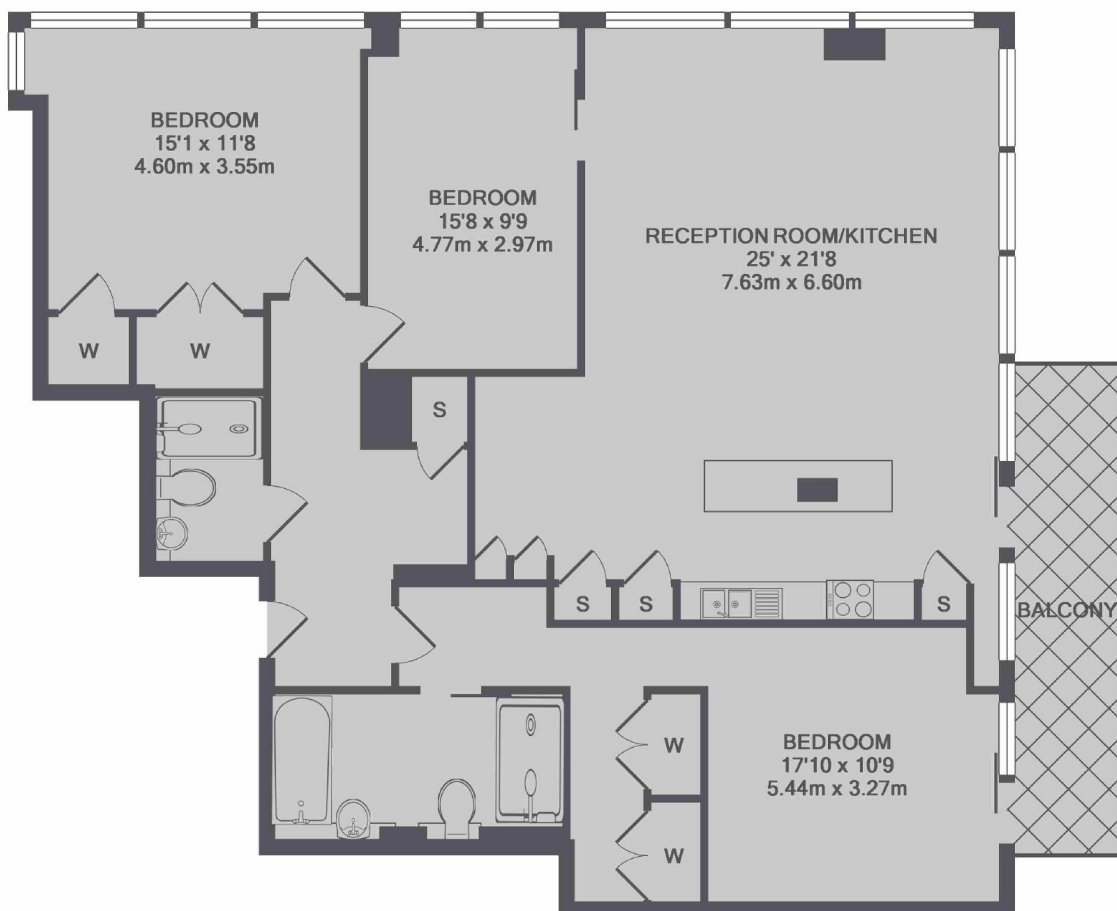
A three bedroom dual aspect apartment in the much sought after Heron. With it's floor to ceiling windows and impressive views, this apartment is the perfect retreat after a busy day in the city.

The Heron is located just under quarter of a mile to Moorgate underground, just under half a mile to Barbican and Liverpool Street underground stations.

Features

- Three Double Bedrooms
- Two Bathrooms
- 24 Hour Concierge
- Gym
- Cinema
- Residents Lounge

Moor Lane, London, EC2Y



TOTAL APPROX. FLOOR AREA 1227 SQ.FT. (114.0 SQ.M.)

Contact

To arrange a viewing call our office on the number below or visit our website.



Energy Rating: D. We aim to make our particulars both accurate and reliable. However they are not guaranteed; nor do they form part of an offer or contract. If you require clarification on any points then please contact us, especially if you're traveling some distance to view. Please note that appliances and heating systems have not been tested and therefore no warranties can be given as to their good working order.