

Bollinder Place, EC1V

£600 Per week

Two double bedroom apartment in a brand new luxury development comprising an open plan living area with a modern kitchen suite and integrated appliances, plus full height windows throughout with great views of the City and Regents Canal. Sizable master bedroom with fitted

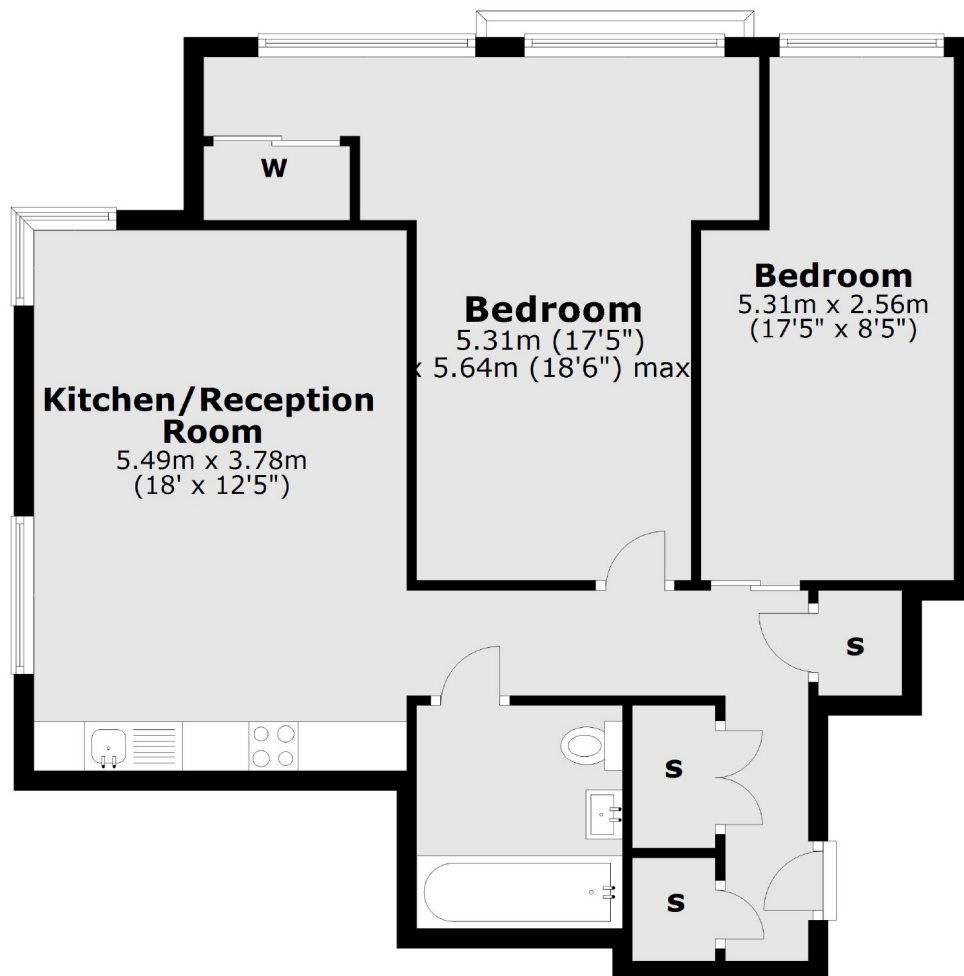
Carrara Tower is situated under half a mile from Angel and Old street Station on the Northern line, making it ideally placed for quick access to the City and Central London.

Features

- Two Bathrooms
- 24 Hour Concierge
- Pool, Gym & Spa
- Comfort Cooling
- Resident's Lounge
- Communal Gardens
- Furnished / Unfurnished

Bollinder Place,
London, EC1V

Fourteenth Floor



Total area: approx. 69.7 sq. metres (750.6 sq. feet)

Contact

To arrange a viewing call our office on the number below or visit our website.



Energy Rating: . We aim to make our particulars both accurate and reliable. However they are not guaranteed; nor do they form part of an offer or contract. If you require clarification on any points then please contact us, especially if you're traveling some distance to view. Please note that appliances and heating systems have not been tested and therefore no warranties can be given as to their good working order.