



Bollinder Place, EC1V

£3,500 Per calendar month

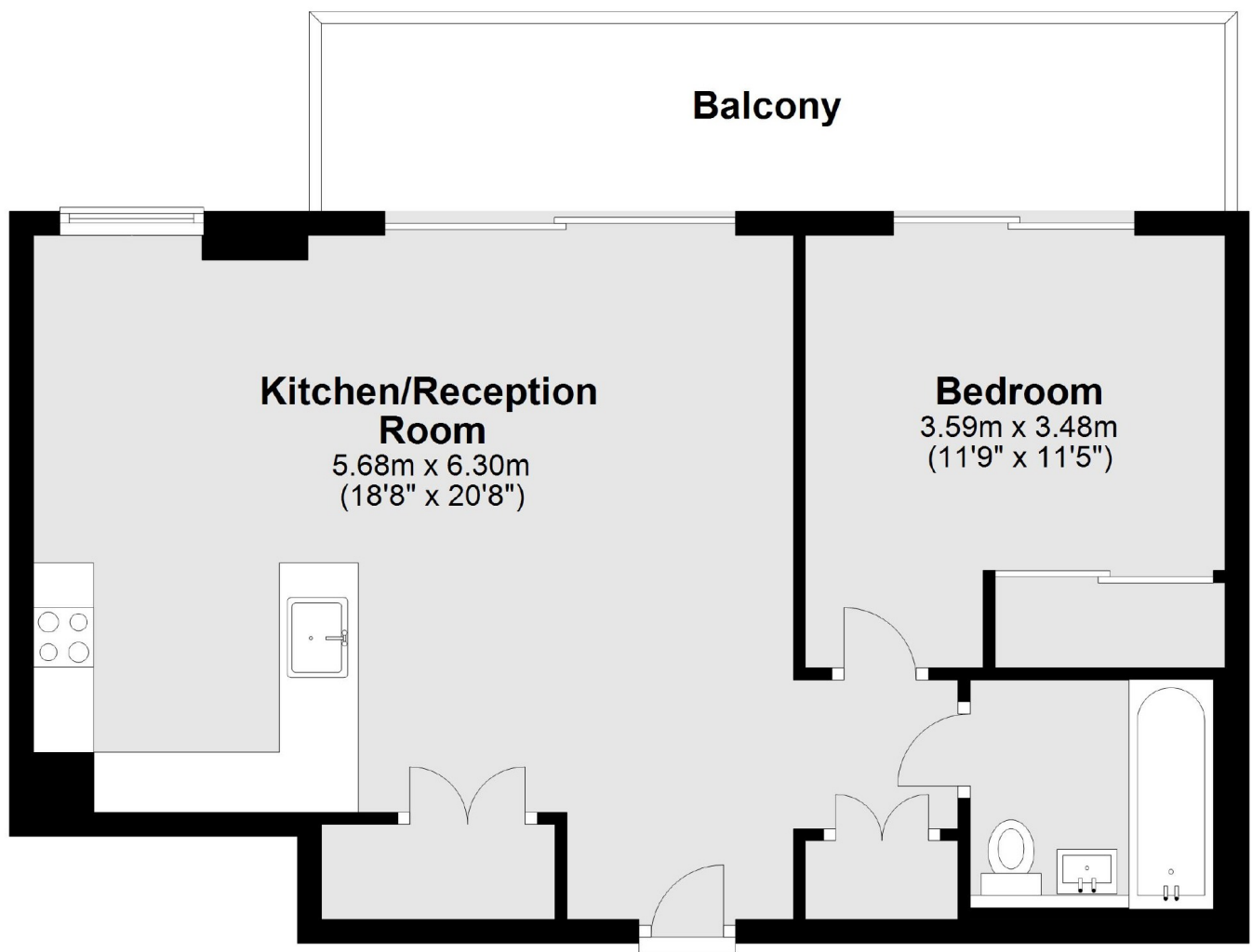
A luxury apartment with a large private balcony comprising an open plan living area with a modern kitchen suite and integrated appliances. There are full height windows throughout with great views of the City and Regents Canal. Residents have access to excellent facilities including a lounge, gym, pool and a sauna

Carrara Tower is situated under half a mile from Angel and Old street Station on the Northern line, making it ideally placed for quick access to the City and Central London. Tenancy Managed by Dexters

Features

24 Hour Concierge
Pool, Gym & Spa
Comfort Cooling
Resident's Lounge
Communal Gardens
Managed by Dexters

Bollinder Place,
London, EC1V



Main area: Approx. 54.0 sq. metres (581.6 sq. feet)
Plus balconies, approx. 12.4 sq. metres (133.9 sq. feet)

Dexters

Clerkenwell
1b Britton St
London
EC1M 5NW
Lettings
020 7483 6370

Energy Rating: B. We aim to make our particulars both accurate and reliable. However they are not guaranteed; nor do they form part of an offer or contract. If you require clarification on any points then please contact us, especially if you're traveling some distance to view. Please note that appliances and heating systems have not been tested and therefore no warranties can be given as to their good working order.

 **RICS** | Regulated
Estate Agent
and Letting Agent

dexters.co.uk