



Macclesfield Road, EC1V

£3,650 Per calendar month

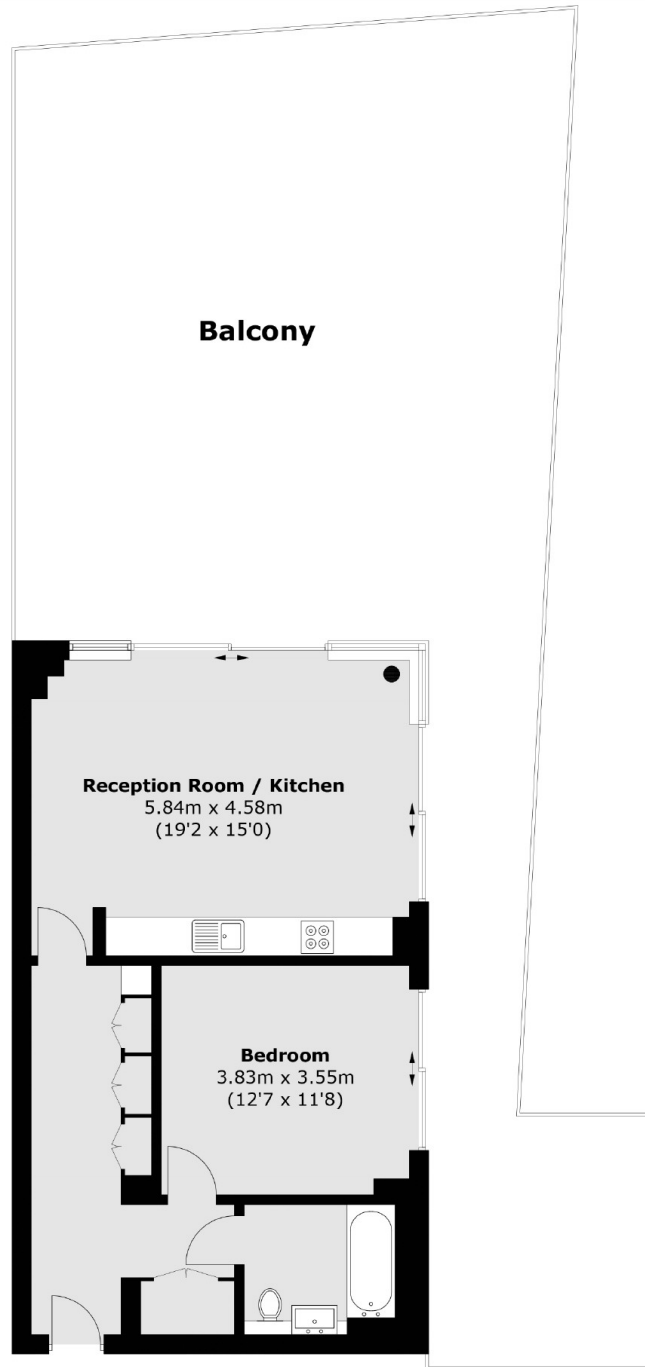
A bright and airy one bedroom penthouse apartment in a modern complex offering open plan living, large double bedroom and a wrap around terrace. On the top floor of a secure development, the private roof terrace offers panoramic views of London.

The property is under half a mile from Angel and Old Street Station with excellent transport links to Central London. It is also ideally located for the vast array of shops, bars and restaurant the area has to offer.

Features

- Large Double Bedroom
- Modern Apartment
- Large Private Terrace
- Open Plan
- Penthouse
- Secure Development

Macclesfield Road, London, EC1V



Total area (approx.): 61.8 sq. m (665.2 sq. ft)
Balcony area (approx.): 104.2 sq. m (1,121.6 sq. ft)