



Penny Lane, TW17
£899,950

Waterview


A stunning three-bedroom contemporary home finished to the highest standard with bright open plan living space set close to the Thames.

Penny Lane is a private road set close to Walton Bridge.





Accom is made up of a stylish designer kitchen with central island, high vaulted ceiling and walnut flooring open plan onto dining area and an impressive bright living space with full height built-in units, continued walnut flooring and door to decked eating area and garden.

There are stairs to a galleried landing which leads to a den / office. The principal bedroom has high quality, built-in wardrobes and access to a luxury en-suite. There are two further bedrooms and a beautiful bathroom. One of the two garages has been converted to a utility/exercise studio with storage.

The garden has an 'ipe' hardwood deck for outdoor entertaining and further lawned area. The gravelled driveway has parking for several cars.

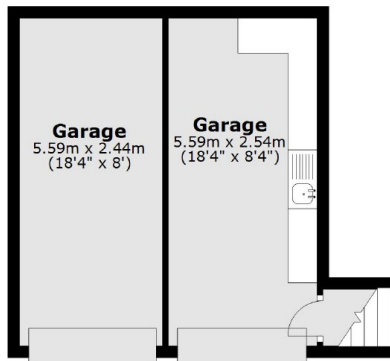
Features

Stunning Home
Three bedrooms
Two bathrooms
Beautiful finish
Two garages
Office/ den

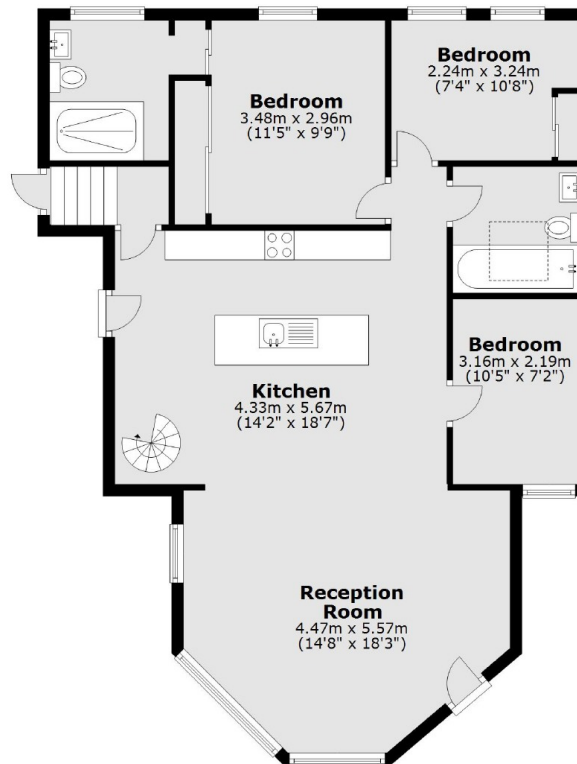


Penny Lane, Shepperton, TW17

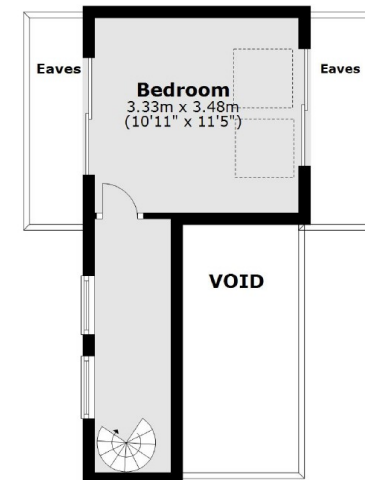
Ground Floor



Ground Floor



First Floor



Total area: approx. 136.0 sq. metres (1464.2 sq. feet)

Contact

To arrange a viewing call our office on the number below or visit our website.



Energy Rating: . We aim to make our particulars both accurate and reliable. However they are not guaranteed; nor do they form part of an offer or contract. If you require clarification on any points then please contact us, especially if you're traveling some distance to view. Please note that appliances and heating systems have not been tested and therefore no warranties can be given as to their good working order.

