



Church Road, SL4

£1,600,000

Waterview

A rare opportunity, this beautiful riverside family home set within 3.5 acres of private gardens and woodland set overlooking The Thames.

Church Road is located off Straight Road, Old Windsor in this picturesque rural setting by The Thames within a five minute drive of Windsor.





Accommodation is set over three floors. The ground floor comprises of a large 26' open plan kitchen/breakfast room with doors to a full width terrace overlooking the boat dock which leads to the river. There are three double bedrooms all with en-suite, W.C., and utility room. On the first floor the main feature is an impressive 23'x23' drawing room, feature stone fireplace, conservatory and two sets of French doors to a wrap around balcony and entertaining terrace. Also on this level is the master bedroom suite, with access to river terrace, en-suite bathroom and a further large kitchen/dining room with access to balcony.

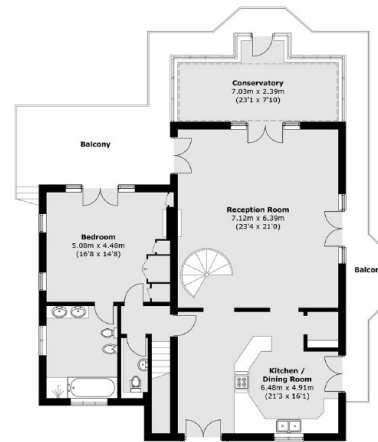
The top floor is accessed via a spiral staircase and consists of three bedrooms, family bathroom, kitchenette and access to a further river facing balcony with stunning views. The house is approached via electric gates to a sweeping drive through pretty gardens to a paved parking area with a large detached garage. The house is set within well maintained lawned gardens with access to the riverside towpath and extensive private woodland of 3.5 acres.

Features

Riverside Home
Seven Bedrooms
Five Bathrooms
3.5 Acres
River Views
Wet Dock Mooring



Church Road, Old Windsor, SL4



Total area (approx.): 374.8 sq. m (4,034.3 sq. ft)
 Outbuilding: 48.1 sq. m (517.7 sq. ft)
 (Excluding Eaves)
 Balcony: 49.3 sq. m (530.7 sq. ft)

Contact

To arrange a viewing call our office on the number below or visit our website.



Energy Rating: D. We aim to make our particulars both accurate and reliable. However they are not guaranteed; nor do they form part of an offer or contract. If you require clarification on any points then please contact us, especially if you're traveling some distance to view. Please note that appliances and heating systems have not been tested and therefore no warranties can be given as to their good working order.

