



Strawberry Vale, TW1
£1,050,000

Waterview


A stunning two double bedroom apartment set within this contemporary, award winning development of only eight units with extensive landscaped gardens, overlooking The Thames and a private mooring.

Strawberry Vale runs parallel to The Thames between the popular towns of Twickenham and Teddington.





Accommodation is made up of a bright and spacious open plan living area with space for dining, stylish modern kitchen and fantastic views across the gardens to the river beyond. There is a front facing balcony off the living area.

The principal double bedroom has access to a full width private terrace, with river views, and en-suite. The second double bedroom has access to the front balcony and there is a further second bathroom. The apartment is offered in excellent condition, with no onward chain. There is underfloor heating and a new electric boiler has just been installed.

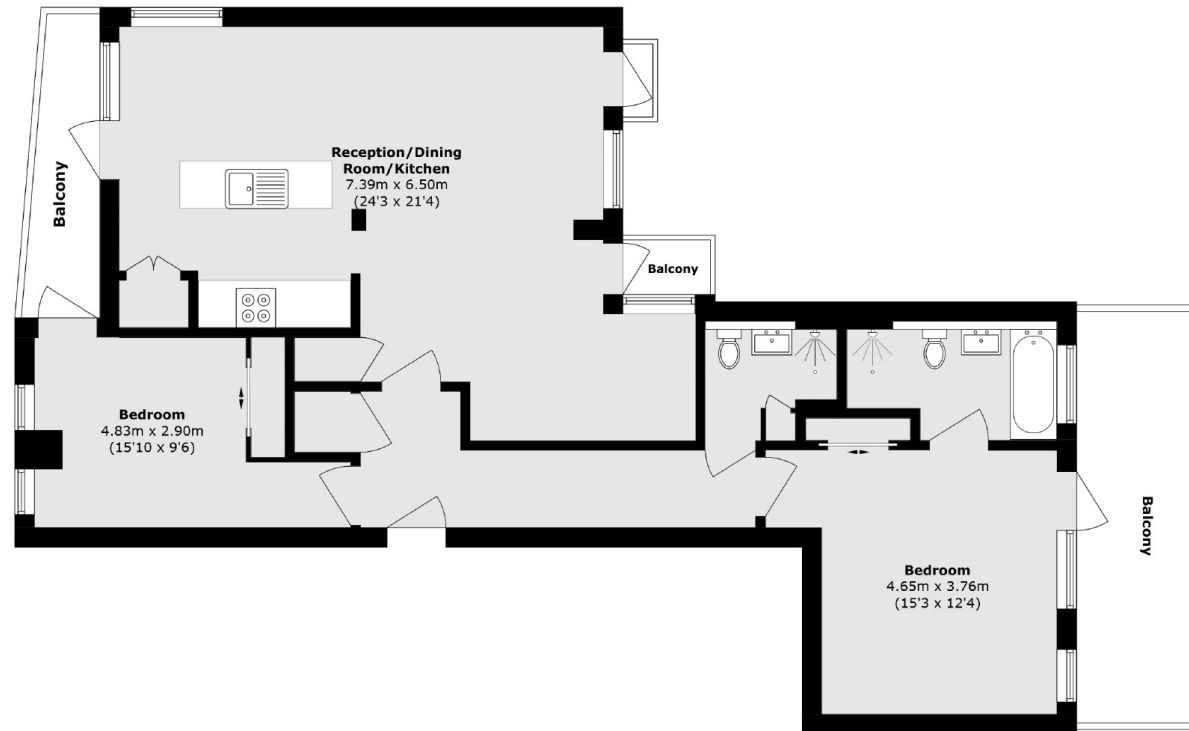
The lift service accesses the secure underground parking space and also gives access to the extensive well maintained gardens which lead to the river frontage and pontoon mooring with a 23' section included within the sale.

Features

Award Winning
Development
Beautifully Presented
Private Terrace
Extensive Gardens
Mooring
No Chain



Strawberry Vale, Strawberry Vale, TW1



First Floor

Total area (approx.): 92.4 sq. m (994.5 sq. ft)
Balcony area (approx.): 17.7 sq. m (190.5 sq. ft)

Contact

To arrange a viewing call our office on the number below or visit our website.



Energy Rating: . We aim to make our particulars both accurate and reliable. However they are not guaranteed; nor do they form part of an offer or contract. If you require clarification on any points then please contact us, especially if you're traveling some distance to view. Please note that appliances and heating systems have not been tested and therefore no warranties can be given as to their good working order.

