



Riverside, TW16  
£1,050,000

Waterview



A spacious four bedroom, four bathroom property on the banks of the River Thames with a private mooring. This amazing property offers over 2300 sq ft of flexible accommodation spread over three floors.

This property has a remarkable location on the Lower Hampton Road backing on to the River Thames, Sunbury Court Island and the local shops in Sunbury Village are all close by.







On the lower floor there is a generous reception room, a kitchen, a dining room, a study and a conservatory, this level opens out on to the patio garden and leads down to the River Thames and the private mooring which is approximately 40 ft.

On the middle floor, which is the level you access the property from the Lower Hampton Road, there are two generous double bedrooms, both with en-suite bathrooms and a further study area.

On the top floor there are two additional double bedrooms both with en suite shower rooms and balconies with views over the River Thames. There is also an additional room currently used as a further reception room.

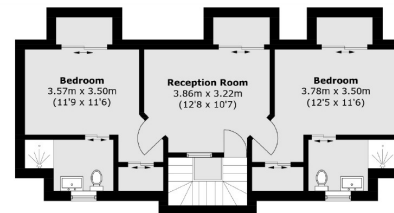
### Features

- Detached
- Four Bedrooms
- Four Reception Rooms
- Four Bathrooms
- Garage
- Private Mooring

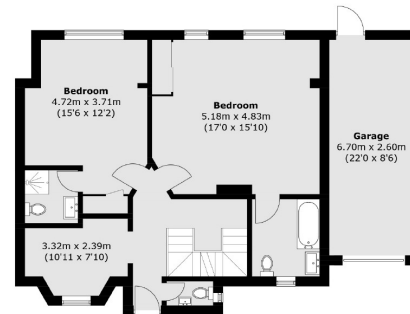




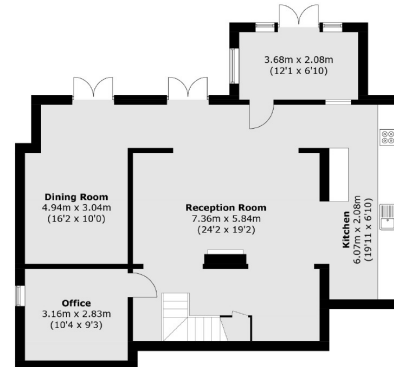
# Riverside, Sunbury-On-Thames, TW16



**Second Floor**



**Ground Floor**



**Lower Ground Floor**

Total area (approx.): 217.6 sq. m (2342.2 sq. ft)

Garage area (approx.): 17.5 sq. m (188.4 sq. ft)

## Contact

To arrange a viewing call our office on the number below or visit our website.



Energy Rating: C. We aim to make our particulars both accurate and reliable. However they are not guaranteed; nor do they form part of an offer or contract. If you require clarification on any points then please contact us, especially if you're traveling some distance to view. Please note that appliances and heating systems have not been tested and therefore no warranties can be given as to their good working order.



