



Laleham Reach, KT16

£320,000

Waterview

A rare opportunity to purchase this wonderful plot on this picturesque stretch of The Thames which is made up of an approx 50ft residential mooring with a pretty garden, studio with W.C., summer house and large store room with workshop.

Northern Burway is a pedestrian access stretch of The Thames with secure resident's parking and visitors spaces.





The plot measures 68ft x 55ft and incorporates a large studio with shower and W.C., a riverside summer house and a spacious store room and workshop. These buildings are not classed as full residential and are for occasional use. The property also has the advantage of high speed fibre broadband.

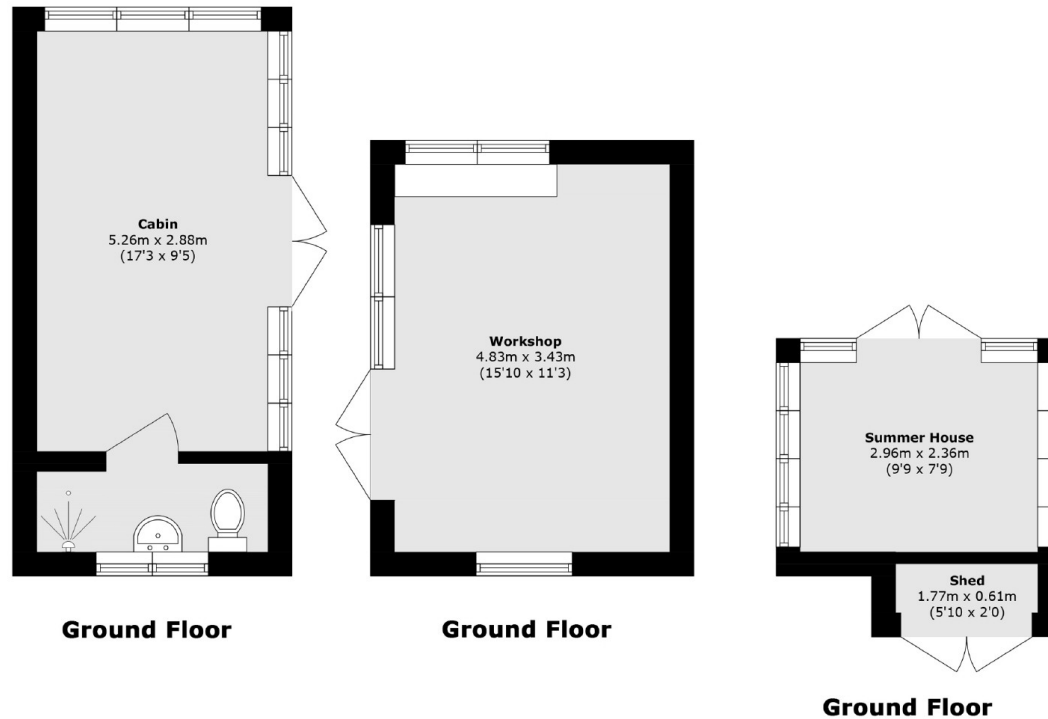
The 55ft private mooring is on a full residential license, allowing the owner to live on a boat or floating home. The Dutch barge currently moored here is not included in the sale price but available under separate negotiation.

Features

Beautiful plot
50ft Residential
Mooring
No Chain
Secure Parking
River Views



Laleham Reach, Chertsey, KT16



Cabin area (approx.): 18.6 sq. m (200.2 sq. ft)

Workshop area (approx.): 16.5 sq. m (177.6 sq. ft)

Summer House & Shed area (approx.): 8.3 sq. m (89.3 sq. ft)

Total area (approx.): 43.5 sq. m (468.2 sq. ft)

Contact

To arrange a viewing call our office on the number below or visit our website.



Energy Rating: . We aim to make our particulars both accurate and reliable. However they are not guaranteed; nor do they form part of an offer or contract. If you require clarification on any points then please contact us, especially if you're traveling some distance to view. Please note that appliances and heating systems have not been tested and therefore no warranties can be given as to their good working order.

