



Hampton Court Road, TW12

£685,000

Waterview

A beautifully presented, two double bedroom riverside home with full width balcony overlooking this stunning stretch of The Thames by Hampton Court and opposite Bushy Park.

St. Albans Lodge is located off Hampton Court Road which runs parallel to the River Thames.





This upside down house is designed so that the first floor living space benefits from the fantastic river views.

Accommodation is made up of entrance hallway, W.C, impressive principal bedroom with marble tiled en-suite bathroom, further shower room and walk-in wardrobes. There is a further second double bedroom with a range of built-in wardrobes, and en-suite shower room.

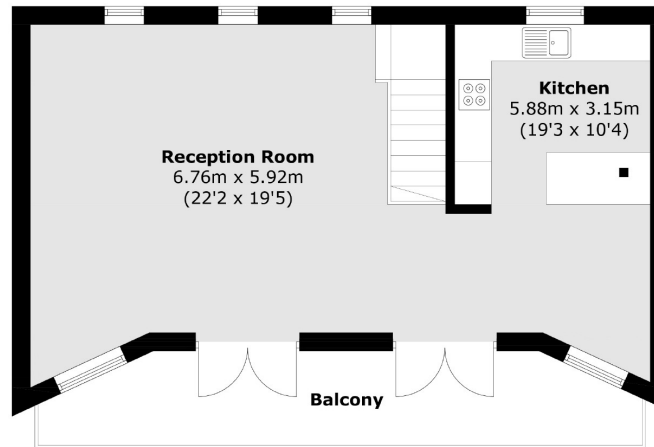
On the first floor there is a spacious double reception room with solid oak flooring and two sets of French doors to the south facing balcony overlooking the river. There is a stylish, integrated kitchen and family dining area. The private, first floor balcony has wrought iron railings and overlooks the enclosed gardens and river beyond. The shared driveway has space for parking.

Features

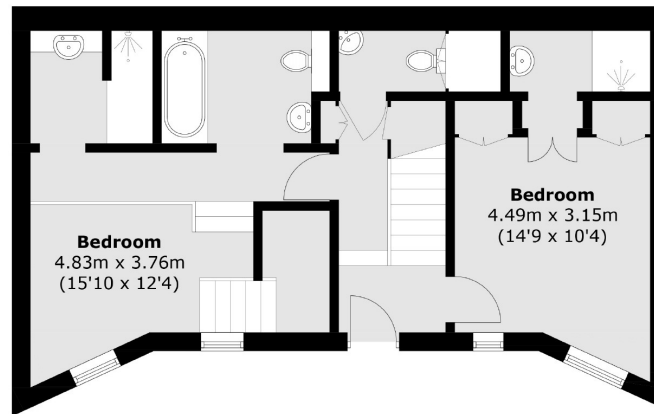
Riverside Home
Two Double Bedrooms
Large Living Space
Full Width Balcony
South Facing
River Views



Hampton Court Road, Hampton, TW12



First Floor



Ground Floor

Total area (approx.): 105.3 sq. m (1,133.4 sq. ft)
Balcony area (approx.): 13.8 sq. m (148.5 sq. ft)

Contact

To arrange a viewing call our office on the number below or visit our website.



Energy Rating: E. We aim to make our particulars both accurate and reliable. However they are not guaranteed; nor do they form part of an offer or contract. If you require clarification on any points then please contact us, especially if you're traveling some distance to view. Please note that appliances and heating systems have not been tested and therefore no warranties can be given as to their good working order.

