



Anglers Reach, KT6
£530,000

Waterview


This bright and spacious two double bedroom apartment is set on the 6th floor of this popular riverside block with breathtaking views of The Thames and Hampton Court beyond.

Grove Road is located off Portsmouth Road which runs parallel to the river between Surbiton and Kingston.





Accommodation is made up of entrance hall leading to a 27' double reception room with space for dining and dual aspect, panoramic river views, and a modern fitted kitchen.

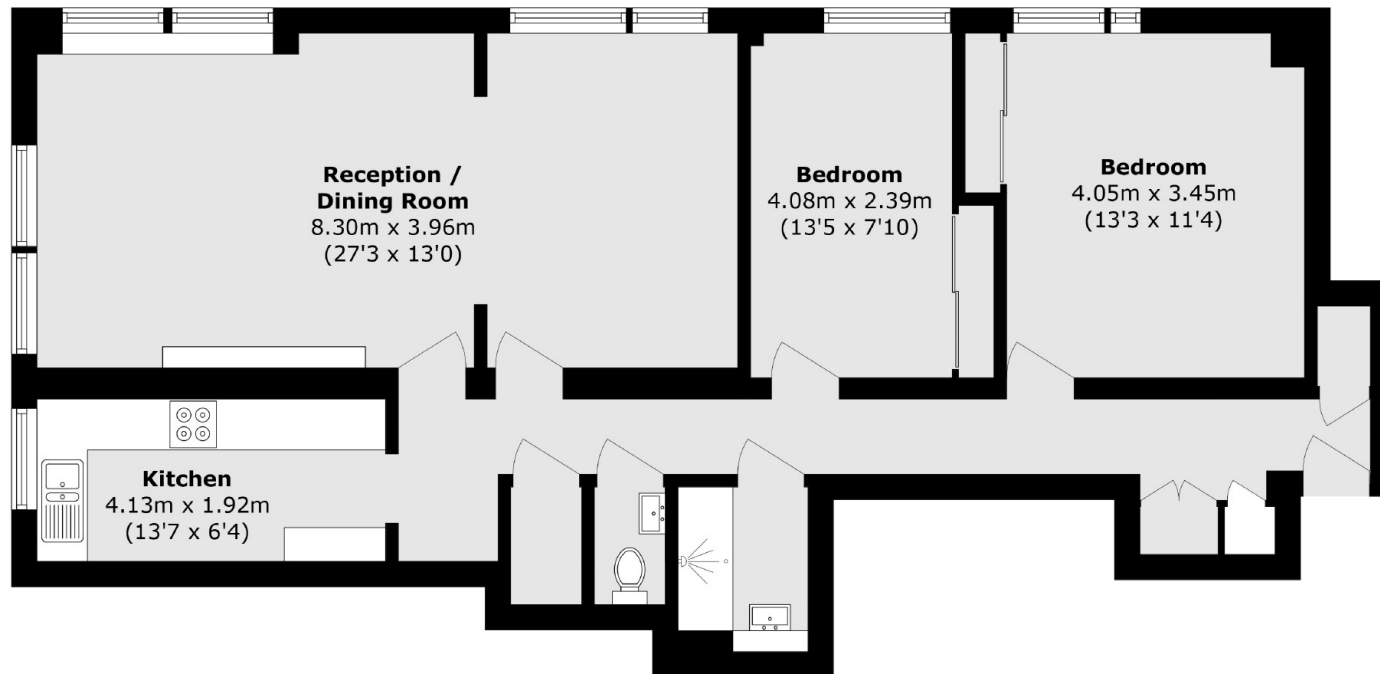
There are two generous double bedrooms, shower room and separate W.C. The apartment is offered with no onward chain, vacant possession and would benefit from some cosmetic updating and is priced accordingly.

Features

- Spacious Apartment
- Fantastic Views
- Lift Service
- Private Garage
- No Chain
- 994 sq ft



Anglers Reach, Surbiton, KT6



Total area (approx.): 92.4 sq. m (994.6 sq. ft)

Contact

To arrange a viewing call our office on the number below or visit our website.



Energy Rating: B. We aim to make our particulars both accurate and reliable. However they are not guaranteed; nor do they form part of an offer or contract. If you require clarification on any points then please contact us, especially if you're traveling some distance to view. Please note that appliances and heating systems have not been tested and therefore no warranties can be given as to their good working order.

