



Esher Road, KT12
£325,000

Waterview


A beautiful, top floor two double bedroom apartment with fantastic views of The River Mole and it's picturesque surroundings.

The Leys is located off Hersham Road which runs between Esher and Weybridge.





Accommodation is made up of entrance hall leading to a large reception room with access to a south facing private balcony overlooking the stunning communal gardens and the River Mole. There is a separate kitchen with all integrated appliances and ample storage.

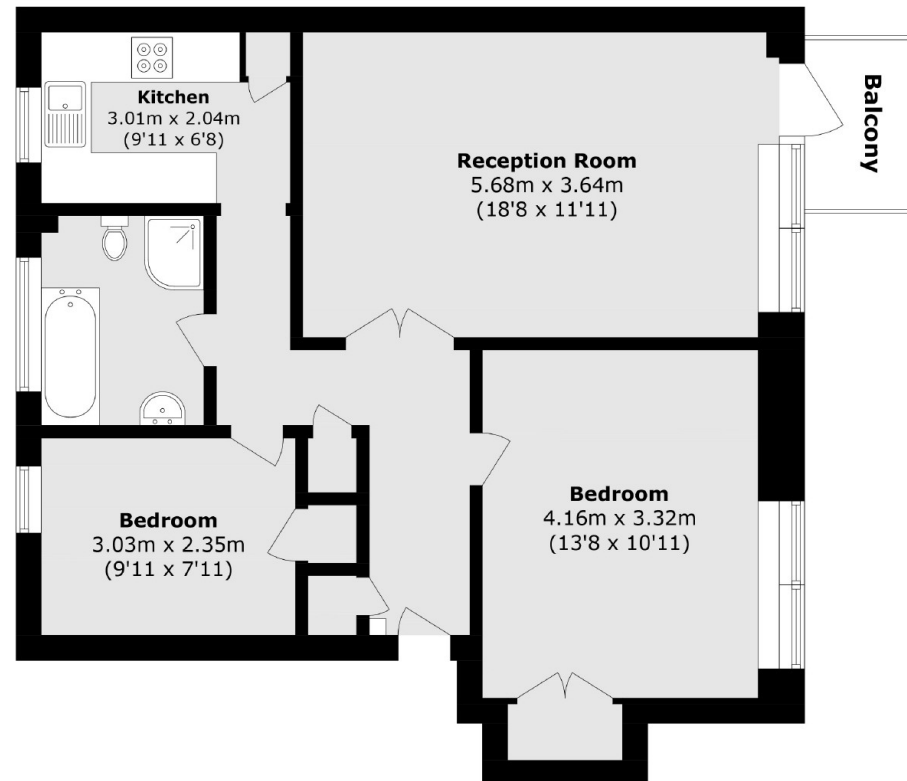
There is a large double bedroom with built-in wardrobes and stunning views over the river. There is also a second double bedroom and modern family bathroom. The apartment is set within pretty communal gardens which run down to the river and comes with a garage as well as an allocated parking space.

Features

Beautiful Apartment
Top Floor
Stunning Views
Private Balcony
Garage
Communal Gardens



Esher Road,
Hersham, KT12



Total area (approx.): 66.9 sq. m (720.1 sq. ft.)
Balcony area (approx.): 2.9 sq. m (31.2 sq. ft.)

Contact

To arrange a viewing call our office on the number below or visit our website.



Energy Rating: D. We aim to make our particulars both accurate and reliable. However they are not guaranteed; nor do they form part of an offer or contract. If you require clarification on any points then please contact us, especially if you're traveling some distance to view. Please note that appliances and heating systems have not been tested and therefore no warranties can be given as to their good working order.

