



Queens Drive, KT7

£2,300,000

Waterview



A beautiful, family riverside home set within extensive beautiful gardens running down to The Thames on this exclusive road in Thames Ditton.

Queens Drive runs parallel to The Thames in the heart of Thames Ditton Village.







Accommodation is made up of entrance hall, with turned staircase to galleried landing, leading to a large living room with feature stone fireplace and original wooden floors which in turn opens onto a garden/river room which overlooks the gardens and river. Off this room is a piano room with side access to garden. There is a well appointed, country style kitchen with central island, open plan onto a family dining room, also overlooking the river. Also on the ground floor is a study, with pod lift to first floor, W.C., cloakroom, utility room and large laundry room.

On the first floor the 20' principal bedroom has en-suite and overlooks the river. There are three further double bedroom, one single bedroom with a family bathroom and further separate shower room. The pod lift is located in a fifth, occasional guest room/study. To the front the house a gravel driveway has off street parking for several cars. The pretty, mature gardens extend 30ft to the side of the house, offering scope to extend (stpp) and run down to the river via steps to 60ft of private moorings with a jetty. A beautiful, mature cedar tree, planted in the 18th century, stands by the riverside with spectacular views on this turn of the river with Home Park opposite.

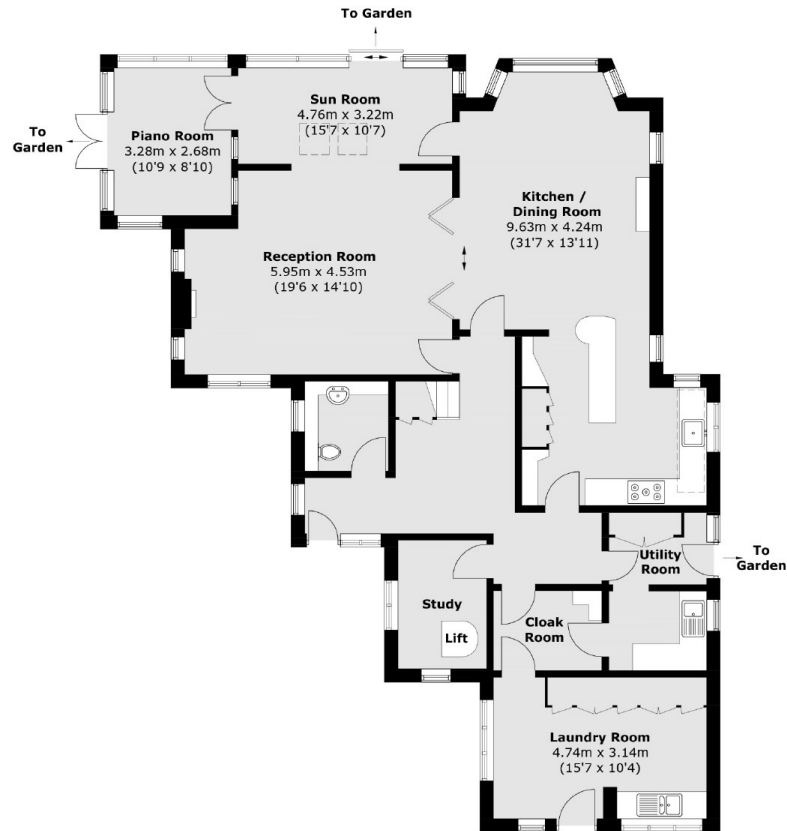
### Features

- Exceptional House
- Stunning Gardens
- Breathtaking Views
- 60ft Mooring
- Rarely Available
- Extensive Accommodation

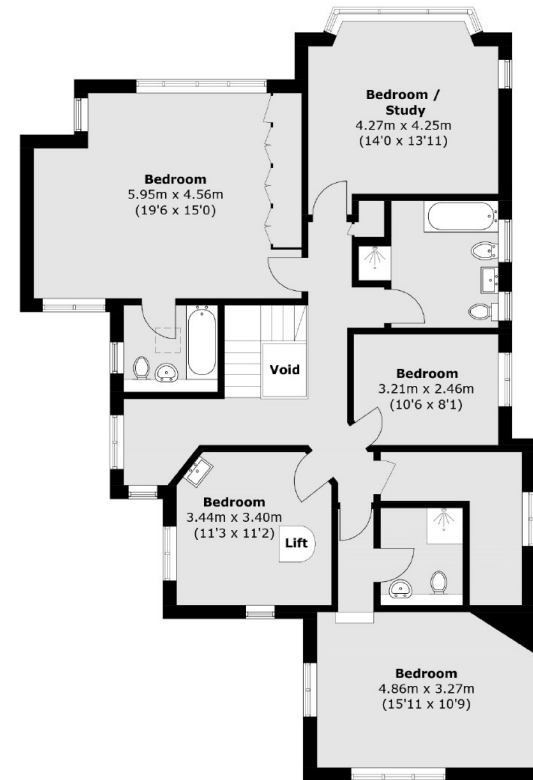




# Queens Drive, Thames Ditton, KT7



**Ground Floor**



**First Floor**

Total area (approx.): 264.9 sq. m (2,851.3 sq. ft)  
(Including Ground Floor Lift / Excluding Void & First Floor Lift)

## Contact

To arrange a viewing call our office on the number below or visit our website.



Regulated  
Estate Agent  
and Letting Agent

Energy Rating: D. We aim to make our particulars both accurate and reliable. However they are not guaranteed; nor do they form part of an offer or contract. If you require clarification on any points then please contact us, especially if you're traveling some distance to view. Please note that appliances and heating systems have not been tested and therefore no warranties can be given as to their good working order.



