



The Boulevard, SW6

£2,250,000

Waterview

An exceptional, three double bedroom apartment within this sought after riverside development offering breathtaking views of the river and London beyond.

Imperial Wharf was built by the award winning St.George Developments, with beautifully kept communal gardens, a range of shops and restaurants, access to the riverside towpath, Imperial Wharf Station and the Thames Riverbus service.





Accommodation is made up of entrance hallway leading to a bright and spacious double reception room with space for dining and floor to ceiling windows offering panoramic views and access to a front river facing balcony.

There is a stylish integrated kitchen with a large range of units, central island and river views/access to a large further balcony. The large principal suite has a range of built-in wardrobes, four piece en-suite and continued river views and access to balcony. There are two further double bedrooms, one with en-suite, a family bathroom and utility room.

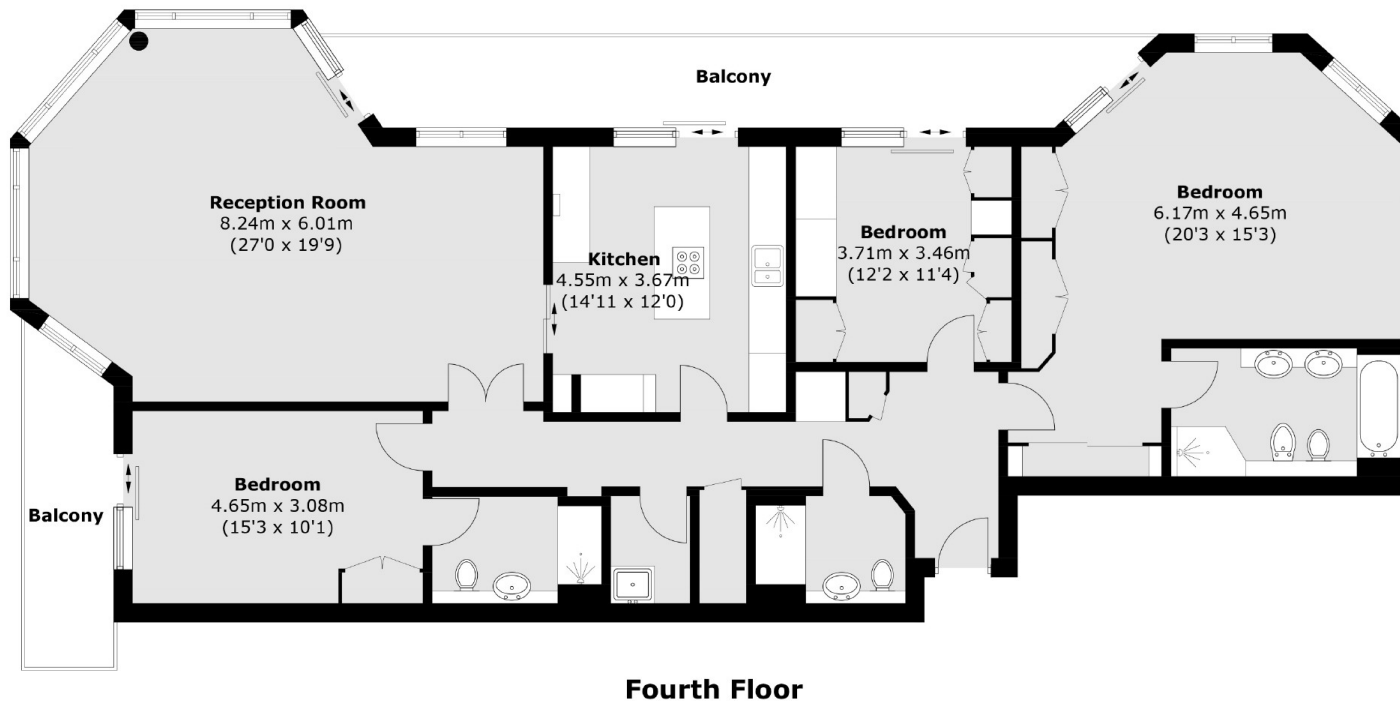
This stunning apartment is set within a secure lift serviced block on the fourth floor with a underground parking space and excellent concierge service.

Features

Exceptional Apartment
Three Double Bedrooms
Three Bathrooms
Private Balconies
River Views
No Chain



The Boulevard, Fulham, SW6



Total area (approx.): 153.6 sq. m (1,653.3 sq. ft)
Balcony : 24.8 sq. m (266.9 sq. ft)

Contact

To arrange a viewing call our office on the number below or visit our website.



Energy Rating: B. We aim to make our particulars both accurate and reliable. However they are not guaranteed; nor do they form part of an offer or contract. If you require clarification on any points then please contact us, especially if you're traveling some distance to view. Please note that appliances and heating systems have not been tested and therefore no warranties can be given as to their good working order.

